



**ENVIRONMENTAL PLANNING DOCUMENT**  
**FOR THE**  
**2023 SOCIAL CIRCLE WATER IMPROVMENTS**

**DRAFT - August 21, 2023**

**Prepared By:**



*400 Pike Boulevard*  
*Lawrenceville, Georgia 30046*  
*Phone: 770-338-8000*

**ENVIRONMENTAL PLANNING DOCUMENT**  
**FOR THE**  
**2023 SOCIAL CIRCLE WATER SYSTEM IMPROVEMENTS**

**TABLE OF CONTENTS**

<u>Section</u>	<u>Description</u>	<u>Page No.</u>
	<b>Summary, Conclusions and Recommendations .....</b>	<b>SCR-1</b>
<b>1</b>	<b>Introductory Information</b>	<b>1</b>
	1.1 Purpose and Scope .....	1
	1.2 Planning Area Description .....	1
	1.3 Project Name .....	1
	1.4 Owner and Operator .....	1
	1.5 Location of Facilities .....	1
<b>2</b>	<b>Current Situation</b>	<b>3</b>
	2.1 Current Environmental Conditions .....	3
	2.1.1 Topography .....	3
	2.1.2 Land Use .....	3
	2.1.3 Soils .....	3
	2.1.4 Surface Water .....	3
	2.1.5 Ground Water .....	3
	2.2 Current Water Demand and Population .....	4
	2.3 Location and Evaluation of Treatment Facilities .....	4
	2.4 Non-Revenue Water/Water Loss .....	4
<b>3</b>	<b>Future Situation</b>	<b>5</b>
	3.1 Future Population and Flow Projections .....	5
	3.2 Future Land Use .....	5
	3.3 Future Environment Without the Project .....	5
<b>4</b>	<b>Alternatives to the Proposed Project</b>	<b>6</b>
	4.1 No Action .....	6
	4.2 Construct the New Water System Improvements .....	6
	4.3 Review of Other Considerations .....	6
	4.3.1 Maximum Operation of Existing Facilities .....	6
	4.3.2 Regional Solutions .....	6
	4.3.3 Innovative and Alternative Technologies .....	6

<u>Section</u>	<u>Description</u>	<u>Page No.</u>
<b>5</b>	<b>Description of the Proposed Project</b>	<b>8</b>
5.1	Narrative of the Proposed Improvements .....	8
5.2	Design Standards .....	10
5.3	Required Permits .....	10
5.4	Operation and Maintenance .....	10
<b>6</b>	<b>Areas of Environmental, Historical and Cultural Concern</b>	
6.1	Introduction .....	11
6.2	Environmental Consequences of the Proposed Project .....	11
6.2.1	Comparison With "No Action" Alternative .....	12
6.2.2	Wetlands .....	12
6.2.3	Floodplain/River Corridor .....	12
6.2.4	Water Supply .....	12
6.2.5	Water Resources .....	12
6.2.6	Groundwater Recharge Area .....	11
6.2.7	Storm Water .....	13
6.2.8	Waste Water Load.....	13
6.2.9	Air Quality .....	13
6.2.10	Solid Waste .....	13
6.2.11	Soil Stability/Erodibility .....	13
6.2.12	Protected Mountains .....	13
6.2.13	Protected Species .....	13
6.2.14	Critical Habitats .....	13
6.2.15	Historical Resources .....	13
6.2.16	Archeological Resources .....	14
6.2.17	Parks and Recreation .....	14
6.2.18	Energy Supplies and Land Use .....	14
6.2.19	Beaches, Coastal Areas, Estuaries, Dunes, Shorelines, Barrier Islands .....	14
6.2.20	Forest Land .....	14
6.2.21	Aquatic Life/Trout Streams .....	14
6.2.22	Noise .....	14
6.2.23	Farm Land.....	14
6.2.24	Hazards, Nuisances and Site Safety.....	15
6.2.25	Water Conservation .....	15
6.2.26	Environmental Justice .....	15
6.2.27	Direct and Indirect Impacts .....	15
6.2.28	Primary and Secondary Impacts .....	15

<u>Section</u>	<u>Description</u>	<u>Page No.</u>
	6.2.29 Cumulative Impacts .....	15
	6.2.30 Present and Future Conditions .....	15
	6.3 Conclusions from Investigation of Environmental Consequences .....	16
<b>7</b>	<b>Preliminary Design and Project Implementation</b>	<b>16</b>
	7.1 Preliminary Design .....	16
	7.2 Project Funding .....	16
	7.3 Present Worth .....	16
	7.4 User Charges .....	16
	7.5 Project Implementation .....	16
	7.6 Metropolitan North Georgia Water Planning District .....	17
	7.7 Service Delivery Strategy for Wastewater Collection and Treatment ....	17
<b>8</b>	<b>Public Participation</b>	<b>17</b>
	8.1 Summary of Public Participation .....	17
	8.2 Required Documentation .....	17

**LIST OF APPENDICES**

<b>Appendix A</b>	Exhibits
<b>Appendix B</b>	Interagency Review Documentation
<b>Appendix C</b>	Service Delivery Strategy Documentation
<b>Appendix D</b>	Public Participation Documentation
<b>Appendix E</b>	Archaeological Study

---

## SUMMARY, CONCLUSIONS AND RECOMMENDATIONS

The 2023 Water System Improvements consists of four elements: (1) The S. Cherokee Rd 12” water main extension will tie into an existing 12” stub out near the CSX Railroad Bridge (west side of road) and will replace the existing 6” main down to Spring St. Cherokee Road will be bored and 12” main will be run down the north side of Spring St to the existing water tank and tie in to an existing 8” main. The existing water main is being upsized to improve system fire flows and pressures on the south side of the railroad bridge. (2) Social Circle Parkway 12” water main extension will connect at E. Hightower Trl. to the existing line on the north side of the road, then run down the west side of the parkway boring under E Hightower Trl. and the DART Truck entrance/driveway to connect to an existing water main at Cannon Drive. The 12” main will also be extended northward at Thurman Baccus Rd and tie into a 12” main currently under construction. The addition of this water line will help spur continued larger commercial and industrial economic development along the Parkway, as well as to support a proposed school complex. This water line will also tie into the existing system at both ends providing a looped connection to bolster fire flow and improve system water pressures. (3) Brookstone Place Office Park Valve and Interconnection - this element will install a new valves and interconnections to improve fire flow and water pressure at the Brookstone Place Office Park. (4) Social Circle Water Treatment Plant improvements - This element involves a complete electrical upgrade of the existing water treatment plant to 480V, new service panels, new high service pumps and adding SCADA telemetry. Each customer’s existing water service on the South Cherokee Rd-Spring Street portion of the project will be changed over to the new water main upon completion of this section of the project.

The goal of this project is to enhance the existing City water system through improved system pressure and increased fire flows for both commercial, residential customers and institutional as well as encourage new economic development within the City. The project will include all necessary and required protection measures - including erosion control facilities for protection against discharge of sediments into receiving streams and protection against releases of fluids and other waste materials resulting from construction activities.

The City considers this project to be of vital importance to improving the water pressure and fire flow within the water system, as well as to improve the reliability and functionality of the Water Treatment Plant.

Since the project is planned to receive funding through the Drinking Water State Revolving Fund (DWSRF), an Environmental Review was conducted in accordance with requirements established by the Georgia Environmental Protection Division (EPD). The purpose of the Environmental Review was to compare and analyze feasible alternatives to the project and to account for potential environmental, cultural and sociological effects resulting from the project. The findings of the Environmental Review, which are presented in this Environmental Planning Document (EID), are summarized as follows:

1. Project Cost is estimated at \$4,735,200.
2. Benefits to the community include:
  - Elimination of older, undersized water mains.
  - Improvements in fire flow and pressure in several key areas of the City’s water service district.
  - Improvements to the functionality and reliability of the Water Treatment Plant.
3. The City's only alternative to the project was to take no action, which would not solve the problems associated with aging and undersized infrastructure.

4. With proper design and appropriate care in constructing the facilities, the project was deemed to have no significant adverse effects on the environment, the area's historical and cultural resources and on the sociological conditions of the community.
5. No public opposition to the project has been expressed.

The findings of the Environmental Review demonstrate the need for this project. The project will address significant environmental hazards, providing a major improvement in sewer disposal in the target area which will be of great benefit in the health of the area's residents and the environment at large.

## SECTION 1 - INTRODUCTORY INFORMATION

### 1.1 Purpose and Scope

This planning document has been prepared in accordance with requirements established by the Georgia Environmental Protection Division (EPD) for projects proposed to receive funding through the Drinking Water State Revolving Loan Fund (CWSRF) program. The document includes a basic description of the proposed project, details related to its planning process and assessments of potential effects on environmental, cultural and historical resources within and in the vicinity of the project area.

### 1.2 Planning Area Description

The planning area consists of four distinct elements identified in Social Circle's 2018 Water Distribution System Model and Master Plan. Three of the four project elements will increase water flow, fire flow and water pressure in residential and industrial areas of the City and the fourth element will involve upgrades to the Social Circle Water Treatment Plant. **Exhibits 1 and 2** show the project vicinity on a Georgia Department of Transportation (DOT) map. The planning area for the project encompasses the city limits of Social Circle as well as the area outside of the city along Jersey-Social Circle Road.

### 1.3 Project Name

"2023 Water System Improvements" for the City of Social Circle.

### 1.4 Owner and Operator

The new water main facilities will be owned by the City of Social Circle, which is a municipal corporation of the State of Georgia. The facilities will be operated by Social Circle Utilities Department. Contact information for the Water & Sewer Utility is as follows:

**Ms. Robbie Groves**

**PO Box 310**

**Social Circle, Georgia 30025**

**Telephone: 770-464-6980**

**Website: [www.socialcirclega.gov](http://www.socialcirclega.gov)**

### 1.5 Location of Facilities

#### South Cherokee Road/Spring Street Water Main Upgrade

Water mains currently located on South Cherokee Road and Spring Streets in city-owned rights-of-way. Project will upgrade existing lines with larger diameter lines and appurtenances in the same rights-of-way.

#### Social Circle Parkway/Thurman Baccus Blvd. Water Main Upgrade:

Water main extension will take place along Social Circle Parkway (SR 11 Bypass), within GDOT right-of-way and along Thurman Baccus Blvd, a city-owned right-of-way.

#### Brookstone Office Park:

Water valve replacement and line work will take place within permanent utility easements in Brookstone Office Park property and along North Cherokee Road, a city-owned right-of-way.

Social Circle Water Treatment Plant Improvements:

The 5.0 acres water treatment plant property is owned by the City and is located off of Social Circle-Jersey Road.

**Exhibit 3** shows the proposed facilities over USGS quad maps.



---

## SECTION 2 – CURRENT SITUATION

### 2.1 Current Environmental Conditions

#### 2.1.1 Topography

Social Circle sits on a hill, with the land sloping gently in all directions away from the city center. The intersection of Hightower Trail and Cherokee Avenue (near the old well) sits at 893 ft. The elevation drops almost 100 feet as you progress out of the downtown area in any direction. The water treatment plant uses water pumps to pressurize the four water tanks and the overall system and there are some pressure problems within the system due to the elevation differences.

#### 2.1.2 Land Use

Social Circle is a rapidly growing community due to the outward growth of the Atlanta region. Social Circle's proximity to the railroad and Interstate 20 have increased the industrial development prospects in the last few years. The Stanton Springs industrial development southeast of the City is expected to be the home of the gigantic Rivian automotive assembly plant and associated uses. The future land use and character areas are listed in **Appendix A**.

#### 2.1.3 Soils

According to the USGS Web Soil Survey, soils in the City are mainly sandy clay loam series (Appling and Cecil series) in the downtown area. Stony loam coarse sand soil types are found along the creek banks (Louisburg series), together with Chewalca, Cartecay and Toccoa soils. The Appling and Cecil series of soils have few limitations to site development or excavations. No stream crossings are anticipated with this project, so the wetter soils within the City should not be encountered.

#### 2.1.4 Surface Water

Surface water drainage in the project area drains in all directions from the center of the City, which sits on a hill. Surface water flow from the South Cherokee Road/Spring Street project area flows mainly in a southeasterly direction towards the Little River. Surface water from the Social Circle Parkway/Thurman Baccus Blvd. project area flows in a southwesterly direction towards the Little River. Surface water from the Brookstone Office Park area is collected by the storm drainage infrastructure and discharges in a southeasterly directions towards Means Creek. Surface water on the water treatment plant property discharges towards the Alcovy River in a westerly direction

#### 2.1.5 Ground Water

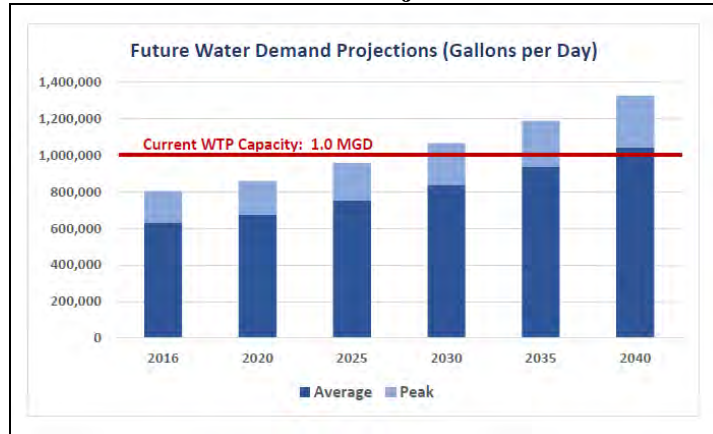
The target area is part of the Social Circle water distribution system. All homes and commercial enterprises in the project area receive their water supply from the City water system.

As with surface water, ground water movement in the project areas follows the area topography as discussed in Section 2.2.4 above.

**2.2 Current Water Demand and Population**

The 2021 population of Social Circle was estimated at 5,121 persons by the US Census Bureau. Social Circle is home to a number of large industries, which drive water demand as well. The Table below shows historical and projected water demand.

**Table 1 – Social Circle Projected Water Demand**



**2.4 Location and Evaluation of Treatment Facilities**

There is one water treatment facility in the Social Circle water distribution system, shown in Table 2 below. The City maintains a 1.0 MGD water withdrawal permit from the Alcovy River. The City also has interconnections with several neighboring systems that are used if the need arises:

**Table 2 – Social Circle Water Treatment Facility**

Facility Name	Capacity, MGD
Social Circle Water Treatment Facility	1.0
Interconnection with Walton County SR 11- North side of City	Varies
Interconnection with Newton County SR 11- South side of City	Varies

**2.5 Non-Revenue Water/Water Loss**

The 2016 AWWA water audit indicated a water loss rate of 0.15 MGD, approximately 25% of water produced that year. Since this audit, the City has made several water system improvements to replace aging and undersized lines, which has decreased the non-revenue water/water loss.

---

## **SECTION 3 – FUTURE SITUATION**

### **3.1 Future Population and Flow Projections**

City of Social Circle average day water demands were reported to be 633,000 GPD average day, and 802,000 GPD peak during calendar year 2016. When evaluating the State of Georgia Office of Planning and Budget (OPB) population projections for both Walton and Newton County, OPB predicted a 1.2% to 1.8% annual population growth in the Social Circle area. Given the high regard for the Social Circle School System, and available housing, one can anticipate that the City of Social Circle's population growth rate will likely outpace adjacent unincorporated areas at a rate of approximately 2% per year.

When planning for future water system demands, it is also recommended to include a contingency factor of at least 10% to accommodate anticipated industrial and commercial development. Therefore, the future water demand projections presented below include an annual demand growth rate of 2.2%. As shown in the previous chart, project peak day water demands will likely exceed current water supply capacity by the year 2027. Planning for additional water supply capacity through additional wholesale water purchase agreements or expansion of the City's existing WTP has already stated.

### **3.2 Future Land Use**

Given Social Circle's location near I-20 and northwest of the proposed Rivian plant site, the future land use of the City and surrounding area will see many land use changes as properties are developed for commercial and industrial uses, especially along East Hightower Trail and along Social Circle Parkway. There are also several residential projects under design in the City which will increase the overall demand for water in the planning area.

### **3.3 Future Environment Without the Project**

If the project is not implemented, the residents and businesses in the City will be faced with declining water pressure and flow due to the undersized and tuberculated lines. The water treatment plant will not be able to operate with any efficiency due to the outdated nature of the electrical equipment, resulting in more frequent service disruptions and components are changed piece by piece and budget restrictions allow. Not installing the SCADA telemetry will also post more operational problems for the water system as city employees have to manually control water tank levels, which will pose increased public safety issues and the system grows

---

## **SECTION 4 – ALTERNATIVES TO THE PROPOSED PROJECT**

There are only two options to address the serious issues facing the target area. One option is for the County to take no action and leave the burden on the residents to fix/maintain their septic systems. The second option is to provide reliable sewer infrastructure.

### **4.1 No Action**

With this alternative, none of the proposed improvements would be made and the water system would continue to underperform with regards to flow and pressure in the targeted areas, which could lead to some significant consequences. Not improving the Water Treatment Plant at this time would mean that the electrical components at the facility would continue to deteriorate and performance and water quality will suffer. There are some public health risks in not being able to produce drinking water that meets EPD's water standards. Given the increased growth expected in the city with the Rivian project over the next several years, it is important for the City to continue to improve its water system as increased demands will be placed upon it.

### **4.2 Construct the New Water System Improvements**

Although there were a number of projects identified in the 2018 Water Model and Master Plan document, the project identified in this report are the ones that the leadership in the City have prioritized as needing to be accomplished in this effort. Completing these projects will accomplish the goals of improving water flow and pressure in the targeted areas, as well as eliminate older, undersized lines. The Water Treatment Plan improvements will extend the life of the facility for many years and the addition of SCADA telemetry will allow the overall system to work more efficiently and keep the water levels in the storage tanks at optimal levels for fire fighting. The City is committed to securing funding to continue to address all of the projects outlined in the Master Plan.

### **4.3 Review of Other Considerations**

#### **4.3.1 Maximum Operation of Existing Facilities**

The proposed project will improve the fire flow and pressure in the project planning area, as well as improve the reliability and functionality of the water treatment plant. The improvements will allow the overall water system to operate more efficiently. Social Circle has begun the process to plan for additional treatment capacity, as well as retaining the ability to purchase water from two neighboring water systems as needed. .

#### **4.3.2 Regional Solutions**

The Social Circle water system will benefit from the operational improvements offered by the project elements. The electrical improvements at the water treatment plant will promote more efficient use of electricity at the facility and the introduction of SCADA telemetry will improve the operation efficiency of the water system as a whole. Due to the interconnections with Walton and Newton County water systems, there will be adequate water supply to supply the new and upgraded water mains.

#### **4.3.3 Innovative and Alternative Technologies**

The water system mains, valves, hydrants and other appurtenances proposed reflect Social Circle and AWWA standards and, therefore, reflect the most practical and appropriate technology for accommodating water distribution in the project area. The

proposed electrical improvements at the water treatment plant will be designed to meet all applicable electrical and building codes and AWWA Standards for high service pumps, etc.

## SECTION 5 – DESCRIPTION OF THE PROPOSED PROJECT

### 5.1 Narrative of the Proposed Improvements

The proposed project will involve four distinct elements that were identified in Social Circle’s 2018 Water Distribution System Model and Master Plan. Three of the four project elements will increase water flow, fire flow and water pressure in residential and industrial areas of the City and the fourth element will involve upgrades to the Social Circle Water Treatment Plant. The four project elements are described below:

#### South Cherokee Road/Spring Street Water Main Upgrade:

This project element will involve the following tasks:

- Installing approximately 2,140 LF of 12” DIP water main from an existing 12” DIP line near West End Baptist Church and extending southward along South Cherokee Road and then eastward along Spring Street to the Spring Street water tank (**See Exhibit 2**).
- Jack and bore a under South Cherokee Road with a 24” casing for the new 12” DIP main
- Abandon existing 6” water main
- Add six new fire hydrants, installing new valves and other appurtenances
- Salvage existing hydrants
- Reconnecting existing services
- Reconnect an existing 2” main at W. Ash Street
- Tie into an existing 6” main at E. Ash Street
- Tie into the 8” main at the Spring Street tank.

The water line will be installed through typical trenching and backfill operations, except for a 24” bore underneath South Cherokee Road at Spring Street. Ground elevations will be returned to pre-construction elevations. Disturbed areas along the route will be restored with permanent vegetation and driveways will be repaired.

#### Social Circle Parkway/Thurman Baccus Blvd. Water Main Upgrade:

This project element will involve the following tasks:

- Install approximately 10, 270 LF of 12” DIP water main from the intersection of East Hightower Trail and Social Circle Parkway (SR 11), southward along the western shoulder of the Parkway to the intersection of Cannon Drive. This project also includes a 12” main extending northward along Thurman Baccus Road (**See Exhibit 2**) to tie into a water main under construction. A Social Circle gas main runs along the eastern shoulder of the Parkway so the western shoulder is preferred to minimize any conflicts.
- Tie into an existing 10” main at the northern side of East Hightower Trail
- Jack and bore under East Hightower Trail to install a 24” casing for the 12” DIP water main.
- Add thirteen new fire hydrants, valves and other appurtenances.
- Connect to a 12” DIP water main currently under construction along Thurman Baccus Road to loop this line.
- Connect to a 10” water main at the intersection of Social Circle Parkway and Cannon drive to loop the system.

The water line will be installed through typical trenching and backfill operations, except for a 24" bore underneath East Hightower Trail. Three stream crossings are anticipated along the route. Ground elevations will be returned to pre-construction elevations. Disturbed areas along the route will be restored with permanent vegetation and driveways will be repaired. There are no current customers along this section of the Parkway, but installing this new main along the Parkway, including the proposed connection to a 12" main under construction along Thurman Baccus Blvd., will allow several potential commercial and industrial projects to be connected to drinking water. The Social Circle Independent School District is also planning a new school campus along Social Circle Parkway and the new main will supply water for the facility.

Brookstone Office Park:

This project element will involve the following tasks:

- Install 60 LF of 10" DIP water line and 20 LF of 8" DIP water line to establish a new connection from an existing 10" water main that runs through the Brookstone Office Park (See **Exhibit 2**).
- Tie the 10" DIP water main into an existing 6" water main in the western right-of-way of North Cherokee Road.
- The new 10" DIP water main will bypass two non-functional valves and will improve pressure and flow in the area through the connection to the existing 6" water main.
- Install two valves and other appurtenances.

The water line will be installed by cutting the existing asphalt pavement and curb as needed to dig the trench for the main and the taps. The pavement cuts will be restored with backfilling and new asphalt and the curb will be replaced. Any roadway or parking lot striping will be reapplied. Disturbed areas along the in the right-of-way will be restored with permanent vegetation.

Water Treatment Plant Improvements:

This project element will involve the following tasks at the Social Circle Water Treatment Plant (See **Exhibit 2**):

- Replace existing 120/208V power service with new 277/480V underground secondary power service.
- Provide new main plant 480V power distribution panels.
- Provide new or replacement 120/208V transformers, lighting panels, receptacle panels, etc. to backfeed existing Water Treatment Plant loads.
- Refeed existing plant process loads from new 480V power system as required.
- Provide new outdoor sound-attenuated diesel generator sub-base tank and new Automatic Transfer Switch for the water treatment plant.
- Provide (separate) new outdoor sound-attenuated diesel generator sub-base tank and new Automatic Transfer Switch for the Raw Water Pumping Station.
- Provide new separately-enclosed RVSSs and feeders for (1) 40HP Backwash Pump and two (2) 75HP-100HP High Service Pumps
- Provide new supplemental grounding system for Water Treatment Plant facility (not including the Raw Water Pumping Station)
- Provide SCADA telemetry to communicate with the water tanks.
- Demolish obsolete existing electrical equipment/devices/circuitry.

These improvements will be made in a sequence to minimize downtime of the treatment facility. Social Circle has interconnections with other systems to provide/supplement the water in the system when the treatment plant is offline for any work. All equipment that is removed from the Water Treatment Plant will be disposed of in an approved manner.

## **5.2 Design Standards**

Engineering for this project will be based on Social Circle Utilities standards, the Recommended Standards for Water Facilities, latest Edition, Great Lakes Upper Mississippi River Board of State Sanitary Engineers (10-State Standards), and the Georgia Department of Natural Resources - Environmental Protection Division's Minimum Standards for Public Water Systems.

## **5.3 Required Permits**

The project will include temporary and permanent erosion control measures such as silt fence, mulch, grassing, ditch checks, rip rap, geotextile matting, etc. to provide erosion and sediment control, and to comply with local and state regulatory requirements. A land disturbance permit will be required from the Local Issuing Authority.

GA EPD will complete a technical review of the final construction plans. Georgia D.O.T. permits will be required for the work along Social Circle Parkway. No railroad permits will be required since the City has an existing water main under the railroad at East Hightower Trail. Coordination with the Corps of Engineers may be needed due to the three creek crossings along the Social Circle Parkway water main extension.

## **5.4 Operation and Maintenance**

Operation and maintenance of the water mains, appurtenances and treatment plant improvements will be performed by the Social Circle Utilities.



---

## **SECTION 6 - AREAS OF ENVIRONMENTAL, HISTORICAL AND CULTURAL CONCERN**

### **6.1 Introduction**

The planning, design, and construction of municipal water facilities is a complicated process. Whether the project involves an upgrade or expansion of existing facilities or the construction of a completely new line or facility, there are a number of important factors which need to be carefully addressed in order to successfully complete the project's goals. Typically, these goals involve the provision of services for new or expanding development - whether residential, commercial, or industrial - which can result in significant changes in the community.

Since, by definition, a municipal water system is a public owned resource, its components must be designed, constructed and operated in accordance with the public's best interests. These include issues related to quality of life, protection of human health, and minimization of environmental degradation. Thus, Section 6.2 presents a review of areas of environmental concern so as to determine the potential and likely effects that the project's new water facilities will have on Social Circle and its residents, businesses and industries.

### **6.2 Environmental Consequences of the Proposed Project**

The following areas of concern have been investigated for direct impacts and are described herein in accordance with EPD's *Georgia's State Revolving Loan Fund (SRF), Guidance for Project Requirements – Drinking Water SRF*, January, 2004:

#### **6.2.1 Comparison With "No Action" Alternative**

The project will entail a small level of environmental impact during construction due to land disturbing activities and potential spills of motor oil, grease, and other materials used by construction vehicles. The plans and other contract documents will provide protections to minimize degradation of the environment during the installation of the sewer facilities.

The project will also have potential impacts to the environment once the facilities are in use. Social Circle Utilities will be responsible for properly operating and maintaining the new facilities to minimize environmental impacts of the project.

With proper erosion and sedimentation controls and environmentally sound installation during construction and proper and timely operation and maintenance of the facilities, the benefits to the environment by eliminating undersized lines and poor pressure and fire flow far outweigh the potential impacts posed by the project.

#### **6.2.2 Wetlands**

Wetlands serve as important fish and wildlife habitats and breeding grounds and are an integral part of the food chain. Numerous plant varieties and animal species have adapted to the special conditions of freshwater wetlands and cannot survive elsewhere. Wetlands act as cleansing water filters and play an important role in water quality. They serve as storage areas for storm and floodwaters as well as natural recharge areas where ground and surface water are interconnected. In addition, wetlands are aesthetically pleasing and can be used for recreation by man.

The federal government's technical definition of freshwater wetlands is:

*"Those areas that are inundated or saturated by surface or groundwater at a frequency or duration sufficient to support, and that under normal circumstances do support, a prevalence of vegetation typically adapted for life in saturated soil conditions. Wetlands generally include swamps, marshes, bogs, and similar areas."*

As shown in **Exhibit 5**, the USFWS National Wetlands Inventory (NWI) indicates that wetlands may be present along the Alcovy River and along the Little River and unnamed tributaries. However, all construction activities will take place within, or adjacent to the treatment building, so no land disturbance is anticipated on the portion of the property adjacent to the Alcovy River. The water main extension along Social Circle Parkway will involve three creek crossings which will crossing under riverine and freshwater emergent wetlands. Appropriate coordination with the Corps of Engineers will take place to minimize the impact on these riverine wetlands..

### **6.2.3 Floodplain/River Corridor**

A flood plain consists of the channel and the relatively flat area adjoining the channel of a natural stream or river which has been or may be covered by flood water.

As shown in **Exhibit 4**, FEMA designated flood plain exists along the Alcovy River adjacent to the Water Treatment Plant and along the Little River. However, all work elements will be located within the treatment plant building or adjacent to the building, so no land disturbance will occur in or near the floodplain identified in Exhibit 4. The Social Circle Parkway water main extension will involve work in the floodplain along the Little River. The design of the project will involve a minimal amount of land disturbance in the floodplain and there should be no change to the flood elevations at the location after the project is completed.

### **6.2.4 Water Supply**

The project does not in itself involve any changes in the quantity of water withdrawn for potable water use. The project will improve both surface and groundwater quality by reducing non-revenue water loss in the project areas.

### **6.2.5 Water Resources**

The project does not in itself involve any changes in the quantity of water withdrawn for potable water use. The project will improve both surface and groundwater quality by reducing non-revenue water loss in the project areas.

### **6.2.6 Groundwater Recharge Area**

The Georgia Department of Natural Resources has mapped "areas susceptible to ground-water pollution" in the *Georgia Geologic Survey Hydrologic Atlas 20* (1999 Edition). The presence of an "area susceptible to ground-water pollution" identified, means that a local government must comply with Official Code of Georgia Annotated 12-2-8 by adopting, implementing, and enforcing ordinances for recharge area protection. It should be noted that the recharge areas mapped are those regions likely to have the greatest vulnerability to pollution of ground water from the surface and near surface activities of man. Local governments containing significant groundwater recharge areas must adopt regulations at least as stringent as those outlined by the Department of Natural Resources.

According to the *Hydrologic Atlas*, there are a number of areas designated significant groundwater recharge areas in and around Social Circle (See **Exhibit 6**). However, the project areas do not lie within the groundwater recharge area and the proposed

improvements should not impact the groundwater due to the shallow nature of the land disturbance needed to install water pipe.

#### **6.2.7 Storm Water**

The facilities design will include a Stormwater Monitoring Plan in accordance with NPDES General Permit No. GAR100002 which, together with Best Management Practices required by the project's Land Disturbance Permit (see Item 5.3 above), will address control of stormwater runoff including temporary flows during construction and permanent flows following completion of construction activities.

#### **6.2.8 Waste Water Load**

No waste water is anticipated to be generated by the project, so no impacts are anticipated.

#### **6.2.9 Air Quality**

During construction, measures will be taken to reduce emissions and dust associated with project construction.

#### **6.2.10 Solid Waste**

The proposed project will not produce any appreciable amount of solid wastes for disposal. All construction debris will be removed from the project areas and disposed of in an approved solid waste landfill.

#### **6.2.11 Soil Stability/Erodibility**

Potential impacts on erosion and sedimentation control will be avoided by proper design and implementation during construction of measures for minimizing and avoiding erosion and sedimentation. A Land Disturbance Permit (LDP) will be obtained from the City for the project areas which include Best Management Practices for erosion and sedimentation control in accordance with State and Federal regulations.

#### **6.2.12 Protected Mountains**

There are no protected mountains within the project area.

#### **6.2.13 Protected Species**

The proposed project was reviewed by the U.S. Fish and Wildlife Service (USFWS), which determined that federally listed species are not likely to occur on the project site. Copies of correspondence with USFWS are included under **Appendix B**.

#### **6.2.14 Critical Habitats**

The proposed project was also reviewed by the State of Georgia Wildlife Resources Division (WRD) which had no comment on the project, indicating that State or federally listed non-game threatened or endangered species and other important State natural resources are not likely to occur in the proposed project area. Copies of correspondence with WRD are included under **Appendix B**.

#### **6.2.15 Historic Resources**

The proposed project was reviewed by the Georgia Historic Preservation Division (HPD) for confirmation of structures on, or eligible for, the Georgia Register of Historic Places and/or any archeological property that may exist in the proposed project area. Copies of correspondence with HPD are included under **Appendix B**.

*An archaeological study has been performed and the findings are listed in Appendix E.*

#### **6.2.16 Archeological Resources**

The proposed project was reviewed by the Georgia Historic Preservation Division (HPD) for confirmation of structures on, or eligible for, the Georgia Register of Historic Places and/or any archeological property that may exist in the proposed project area. Copies of correspondence with HPD are included under Appendix B.

*An archaeological study was performed in the project areas and the findings are listed in Appendix E.*

#### **6.2.17 Parks/Recreation**

The proposed project does not have any potential for developing recreational areas or open spaces and does not impact any existing recreational areas or open spaces.

#### **6.2.18 Energy Supplies and Energy Usage**

The proposed project should not adversely impact the supply of energy to the City. Replacing old, undersized water mains with larger mains could reduce the amount of energy required to supply water in the City. Replacing outdated electrical equipment and old generators at the Water Treatment Facility should reduce the electricity demand at the facility.

#### **6.2.19 Beaches, Coastal Areas, Estuaries, Dunes, Shorelines, Barrier Islands**

There are no coastal areas in Social Circle; therefore, no coastal marshlands, estuaries, shorelines, barrier islands, beaches or dunes will be affected by the project.

#### **6.2.20 Forest Land**

The proposed project involves constructing new water lines in existing rights-of-way or at the City's Water Treatment Plant. The project will not impact land used for forest operations.

#### **6.2.21 Aquatic Life/Trout Streams**

The proposed construction will not occur near enough to any waterway to impact aquatic life. There are no trout streams in Social Circle.

#### **6.2.22 Noise**

Two of the project elements are within an existing residential/mixed use neighborhood with types and levels of noise typical to most any similar neighborhood. During construction, the main increase in noise will be due to construction activities and traffic from suppliers, earth moving equipment, etc. and will be mostly limited to weekdays between the hours of 8:00 a.m. and 5:00 p.m.

Once construction is completed, the only noise from the new facilities will be from the new generators being installed at the water treatment plant. The generators are sound attenuated, and will only be run to test or in cases of power failure, so noise impacts will be minimal. Therefore, the project will not have a significant impact on existing noise levels.

#### **6.2.23 Farm Land**

The proposed project involves constructing new water lines in existing rights-of-way or at the City's Water Treatment Plant. The project will not impact land used for farming operations.

#### **6.2.24 Hazards, Nuisances and Site Safety**

Public access to the facilities during construction will be restricted and all construction activities will be conducted in accordance with OSHA requirements. Upon completion and start-up of the improvements at the Water Treatment Plant, public access will continue to be restricted. System personnel will be trained to properly operate and maintain all of the new facilities.

Potential nuisances related to noise and air quality are discussed above in Sections 6.2.5 and 6.2.6.

#### **6.2.25 Water Conservation**

The proposed project improvements will involve replacing old, undersized water mains and valves. .

#### **6.2.26 Environmental Justice**

Low-income areas within the proposed project area are shown in **Exhibit 7**.

#### **6.2.27 Direct and Indirect Impacts**

The direct impact on the environment will be limited to the disturbance of the rights-of-way for the construction of the water mains and other improvements. The disturbance around wetlands areas along the three waterways will be minimized because the stream crossing will be installed and the vegetation restored along the

The indirect impact will be improved water pressure and fire flow for residents and businesses.

#### **6.2.28 Primary and Secondary Impacts**

The primary impact of the project is the improvement of water availability, pressure and fire flow for residents, businesses and institutions. Secondary impacts include increased property values due to connection to public water, reduced insurance rates due to additional fire hydrants along the project areas, reduced energy usage due to more efficient usage of pumps and other systems at the Water Treatment Plant and economic benefits due to water availability along a state highway.

#### **6.2.29 Cumulative Impacts**

Cumulative impacts resulting from the project include improve water pressure and flow, improved fire protection in the project areas and improving system reliability.

#### **6.2.30 Present and Future Condition**

The current condition has the water system working inefficiently due to dead end lines, inefficient electrical and pumping systems and inadequate connection. The area around the Social Circle Parkway is experiencing significant industrial growth due to the presence of the Rivian project and the proximity to I-20. The water lines in the area of the Parkway are undersized or non-existent and unable to serve the planned and anticipated growth. The local school district is also planning a new school campus on the Parkway and the closest water line is undersized to handle the fire protection and pressures required for a modern campus.

The completion of this project will improve system efficiencies and increase water flow and pressure for the project areas, as well as improve the fire flow and providing additional hydrants. Looping the water lines will reduce dead spots and reduce the need to flush mains to remove stagnant water from the system. The improvements to the

Water Treatment Plant will improve the safety and efficiency of the facility and the addition of the SCADA technology will allow the entire water system to work more efficiently and lower energy costs.

### 6.3 Conclusions from Investigation of Environmental Consequences

The cumulative effect of the proposed project will be to improve the fire flow and pressure of the project areas as well as improve the ability of the City to provide water for economic development. Negative environmental consequences from this project are minor and can be handled with normal care during construction and operation of the facilities and using procedures to keep any negative impacts minimal.

## SECTION 7 - PRELIMINARY DESIGN AND PROJECT IMPLEMENTATION

### 7.1 Preliminary Design

The total cost of the project is projected as follows:

Construction:	\$3,782,000
Engineering and Other Support:	\$550,000
Administrative/Legal	\$25,000
<u>Contingency:</u>	<u>\$378,200</u>
<b>Total:</b>	<b>\$4,735,200</b>

### 7.2 Project Funding

Funding of the project is as follows:

GEFA DWSRF Loan (proposed)	\$4,135,200
<u>Local Funds (operations)</u>	<u>\$600,000</u>
<b>Total</b>	<b>\$4,735,200</b>

### 7.3 Present Worth

Present worth of the project includes the projected construction cost of \$4,735,200 plus recurring costs for operating and maintaining (OM) the new facilities.

### 7.4 User Charges

User charges and will be utilized to finance construction of the project via system-wide increases of 7.0% in each of FY 2023, 2024 and 2025 in accordance with the Social Circle rate study.

### 7.5 Project Implementation

The City of Social Circle, as the owner of the proposed facilities, will be responsible for implementation of the project to include permitting of plans and specifications with EPD, obtaining easements and, if needed, conducting wetland surveys and other 404 permitting activities necessary for encroachment on jurisdictional wetlands. Social Circle is responsible for issuing land disturbance permits.

Contract documents for each of the project contracts will be prepared to meet GEFA requirements. Construction activities, including pre-construction and construction progress meetings, contractor drawdowns and project closeout will be coordinated with EPD's Construction Management Unit.

## **7.6 Metropolitan North Georgia Water Planning District**

Social Circle is not a member of the Metropolitan North Georgia Water Planning District (MNGWPD); therefore, compliance with MNGWPD planning documents is not applicable.

## **7.7 Service Delivery Strategy for Water Distribution and Treatment**

Social Circle owns and maintains the public water system that serves the City of Social Circle and the surrounding area. The project will provide improved water distribution within the City's approved water service territory and, therefore, it is consistent with the Walton County Service Delivery Strategy (HB 489). Documentation of Walton County's Service Delivery Strategy is included in **Appendix D**.

# **SECTION 8 - PUBLIC PARTICIPATION**

## **8.1 Summary of Public Participation**

A public meeting will be held on September 28, 2023 during which the planning document will be presented and described for public information and comment.

## **8.2 Required Documentation**

The documentation required for the public meeting is attached as **Appendix D**, to include the following:

- Website Advertisement
- Website Copy of Environmental Planning Document
- Website Meeting Date
- List of Attendees
- Meeting Minutes

**APPENDIX A**

**EXHIBITS**

**Contents:**

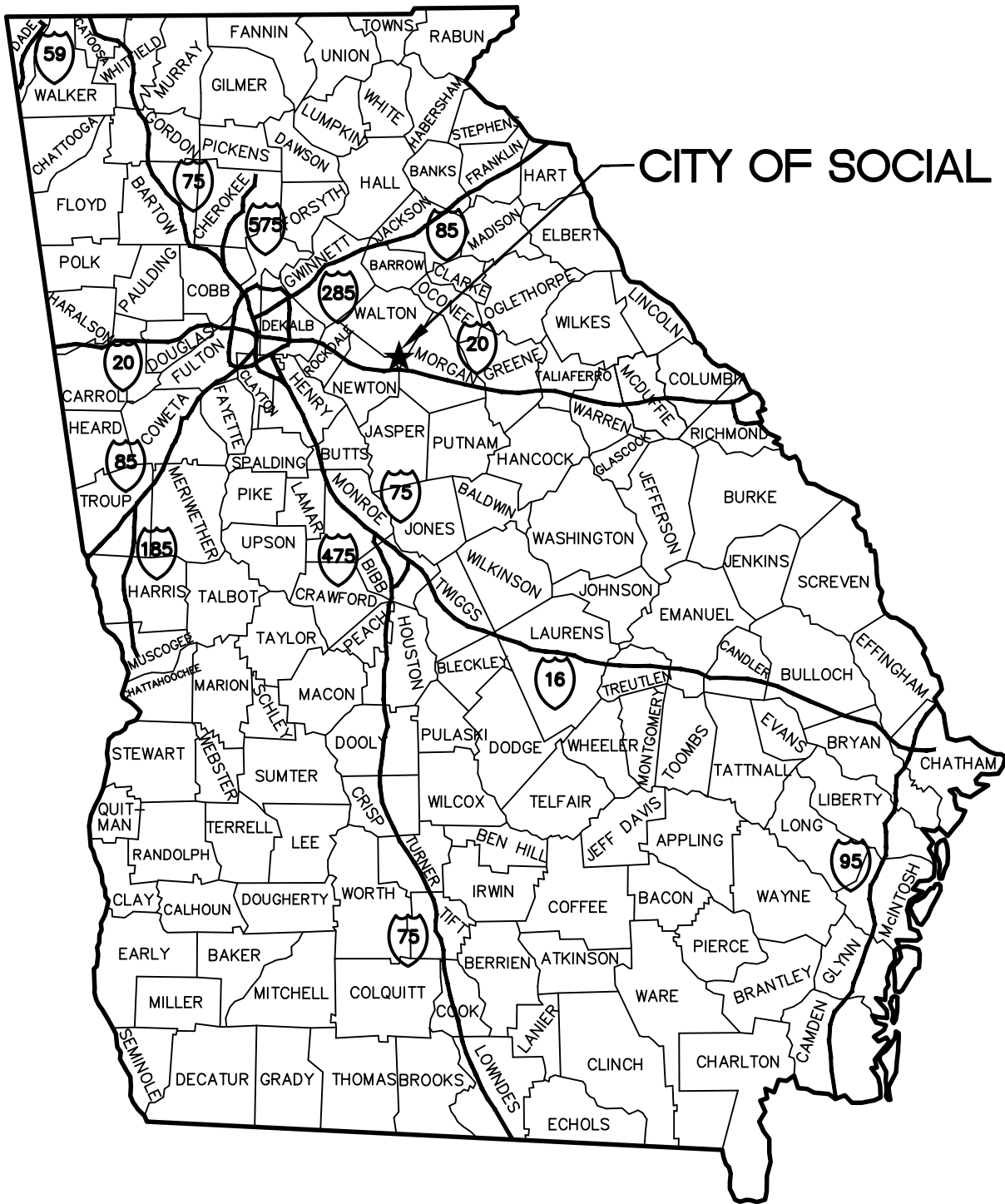
- Exhibit 1: Project Location Map
- Exhibit 2: Facilities Location Map
- Exhibit 3: Proposed Facilities Layout on Quad Map
- Exhibit 4: Flood Plain Maps
- Exhibit 5: Wetlands Maps
- Exhibit 6: Significant Groundwater Recharge Areas
- Exhibit 7: Map of Low Income Households in Project Area



**Exhibit 1: Project Location Map**



# CITY OF SOCIAL CIRCLE



W:\Projects\2018\18230-WR-Social Circle Gen Svcs\dwg\18230\_PER Maps 2023.dwg

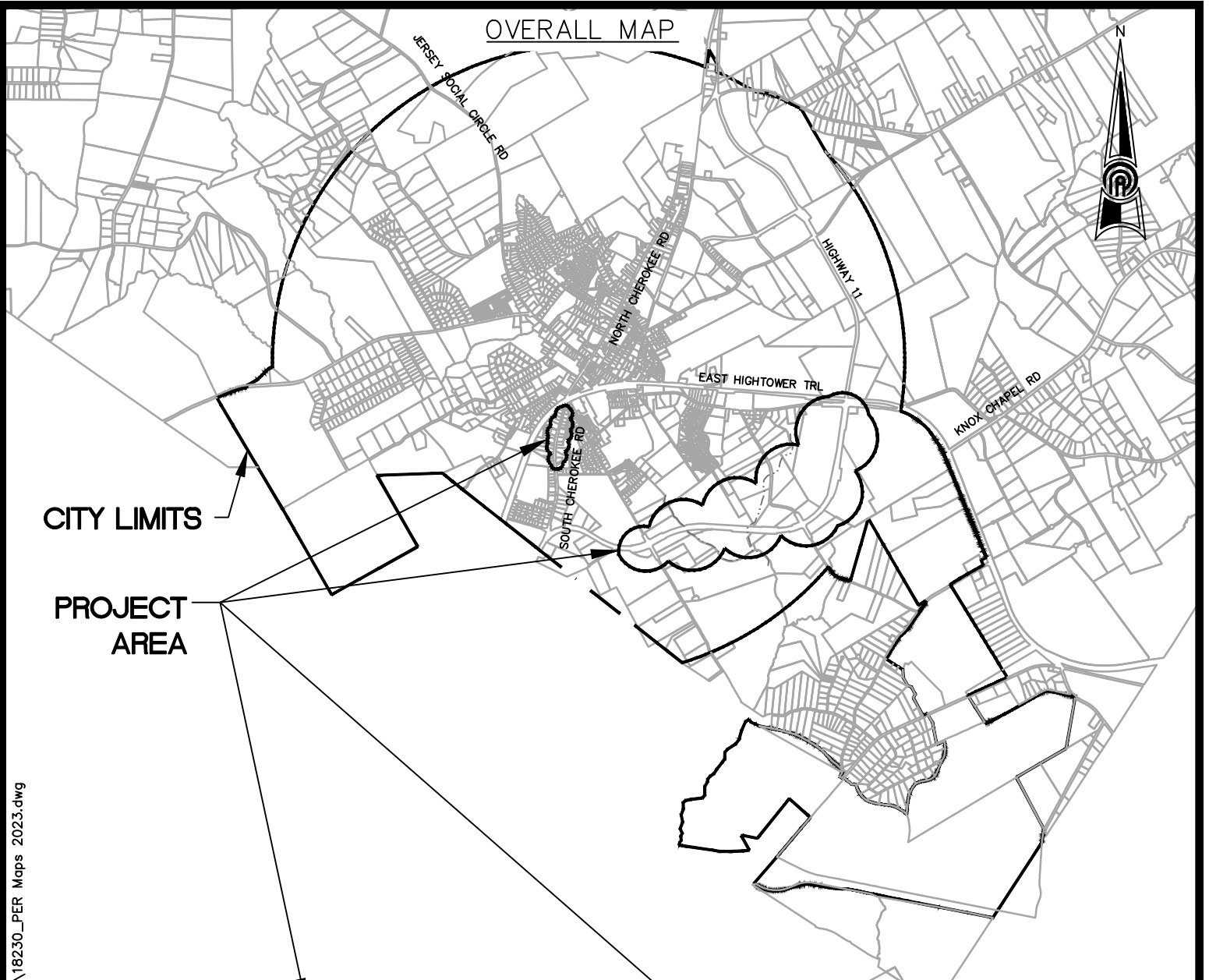


**PRECISION**  
Planning Inc.  
planners • engineers • architects • surveyors  
400 Pike Boulevard, Lawrenceville, Ga 30046  
770.338.8000 • www.ppi.us

2023 DWSRF CITY OF SOCIAL  
CIRCLE WATER SYSTEM  
IMPROVEMENTS

STATE MAP		
Land lot:	District:	Date: 08/01/23
County: WALTON		MAP 1
Drawn By: DMP	Field By:	
Checked By: AJG		
Job #: E18230	Scale: NTS	

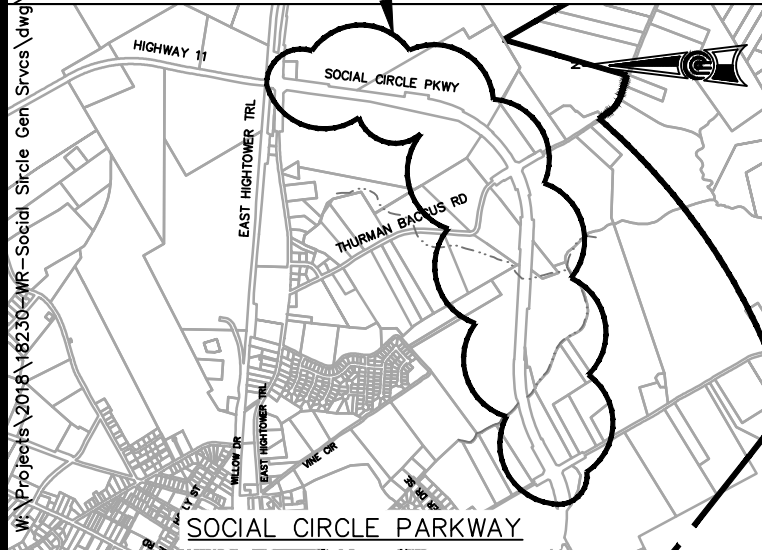
**Exhibit 2: Facilities Location Map**



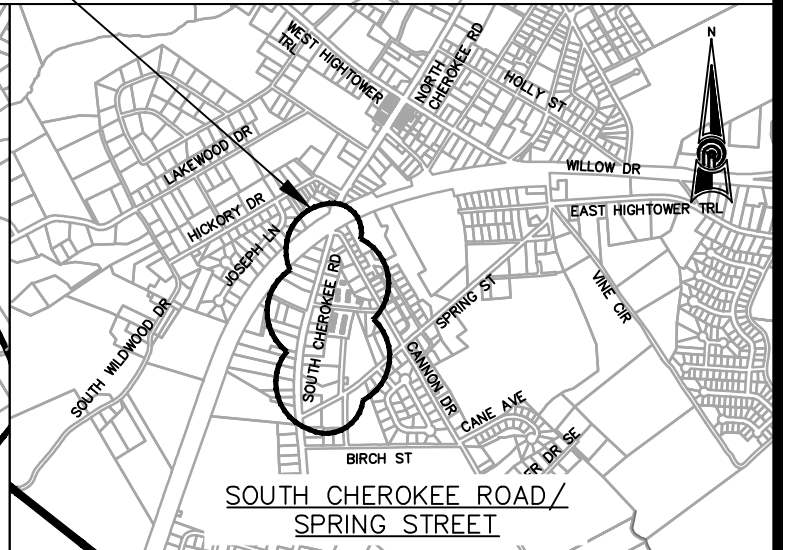
CITY LIMITS

PROJECT AREA

W:\Projects\2018\18230-WR-Social Circle Gen Svcs\dwg\18230\_PER Maps 2023.dwg



SOCIAL CIRCLE PARKWAY



SOUTH CHEROKEE ROAD /  
SPRING STREET



planners • engineers • architects • surveyors

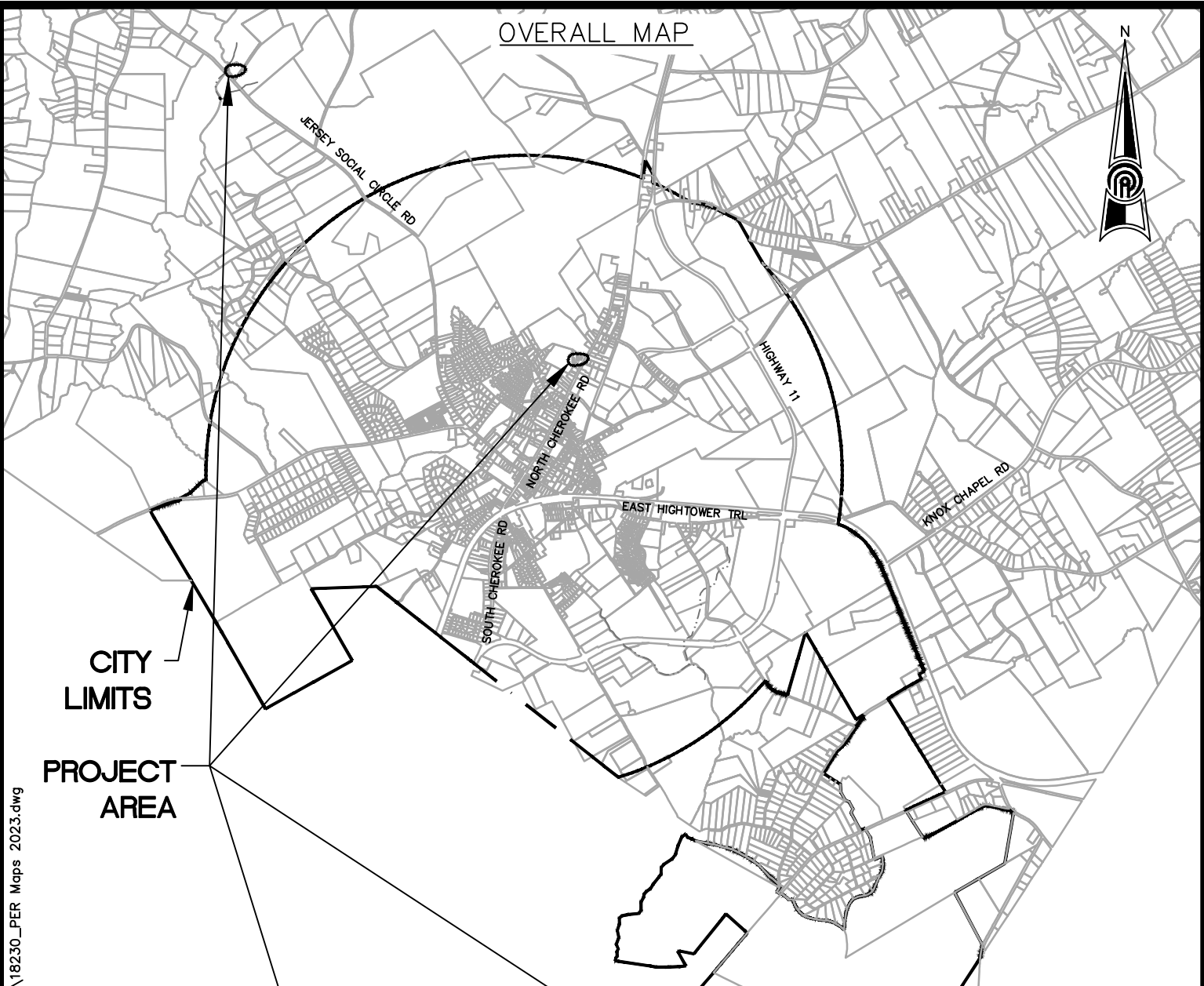
400 Pike Boulevard, Lawrenceville, Ga 30046  
770.338.8000 • www.ppi.us

2023 DWSRF CITY OF SOCIAL  
CIRCLE WATER SYSTEM  
IMPROVEMENTS

COUNTY MAP

Land lot:	District:	Date: 08/01/23
County: WALTON	Field By:	MAP 2
Drawn By: DMP	Checked By: AJG	
Job #: E18230	Scale: NTS	

OVERALL MAP



CITY LIMITS

PROJECT AREA

W:\Projects\2018\18230-WR-Social Circle Gen Svcs\dwg\18230\_PER Maps 2023.dwg



SOCIAL CIRCLE WATER TREATMENT PLANT



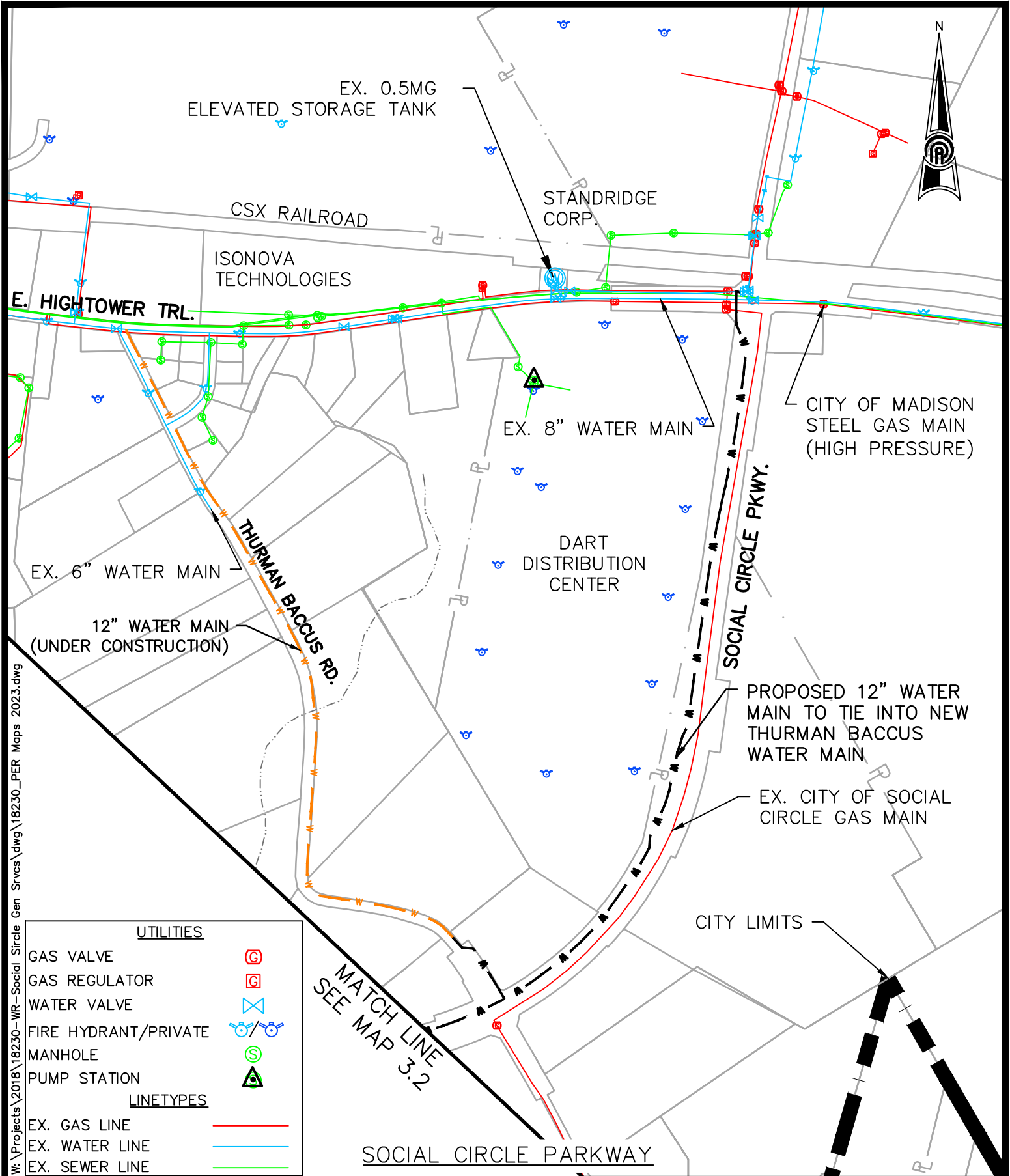
planners • engineers • architects • surveyors

400 Pike Boulevard, Lawrenceville, Ga 30046  
770.338.8000 • www.ppi.us

2023 DWSRF CITY OF SOCIAL CIRCLE WATER SYSTEM IMPROVEMENTS

COUNTY MAP

Land lot:	District:	Date: 08/01/23
County: WALTON	Field By:	MAP 2
Drawn By: DMP	Checked By: AJG	
Job #: E18230	Scale: NTS	



W:\Projects\2018\18230-WR-Social Circle Gen Svcs\dwg\18230\_PER Maps 2023.dwg

UTILITIES	
GAS VALVE	
GAS REGULATOR	
WATER VALVE	
FIRE HYDRANT/PRIVATE	
MANHOLE	
PUMP STATION	
LINETYPES	
EX. GAS LINE	
EX. WATER LINE	
EX. SEWER LINE	

**PRECISION**  
Planning Inc.

planners • engineers • architects • surveyors

400 Pike Boulevard, Lawrenceville, Ga 30046  
770.338.8000 • www.ppi.us

2023 DWSRF CITY OF SOCIAL  
CIRCLE WATER SYSTEM  
IMPROVEMENTS

UTILITY MAP		
Land lot:	District:	Date: 08/01/23
County: WALTON		<b>MAP 3.1</b>
Drawn By: DMP	Field By:	
Checked By: AJG		
Job #: E18230	Scale: 1" = 700'	

THURMAN  
BACCUS RD

MATCH LINE  
SEE MAP 3.1

TRIBUTARY TO  
LITTLE RIVER

PROPOSED 12" WATER  
MAIN TO TIE INTO  
EXISTING CANNON DRIVE  
6" WATER MAIN

VINE CIR.

SRT1

LITTLE RIVER

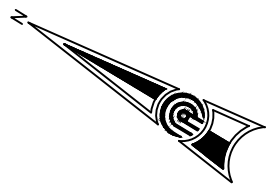
EX. SEWER  
FORCE MAIN

CANNON DRIVE

EX. 6" WATER MAIN

EX. 10" WATER MAIN

SOCIAL CIRCLE PARKWAY



UTILITIES	
GAS VALVE	
GAS REGULATOR	
WATER VALVE	
FIRE HYDRANT/PRIVATE	
MANHOLE	
PUMP STATION	
LINETYPES	
EX. GAS LINE	
EX. WATER LINE	
EX. SEWER LINE	

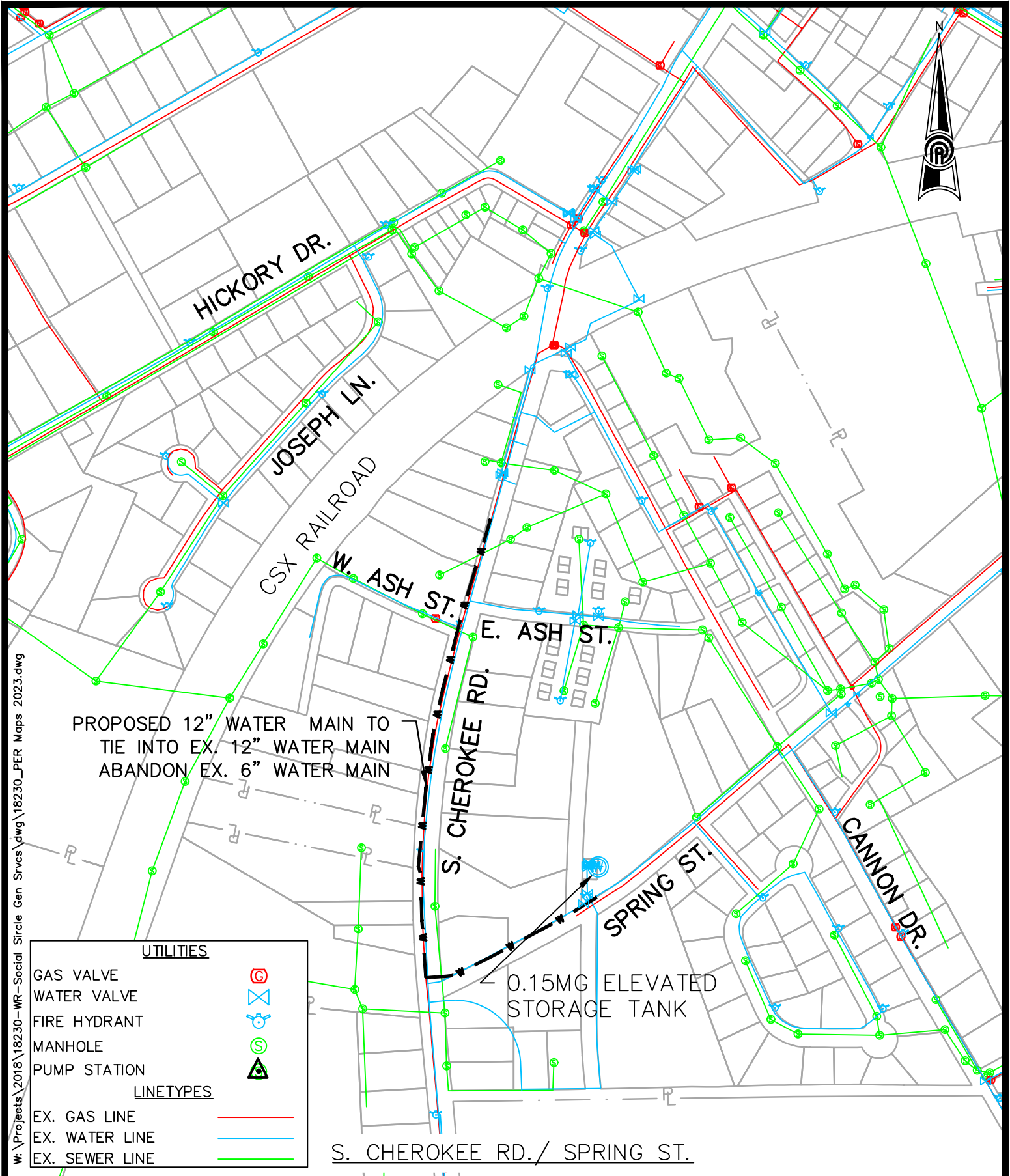
W:\Projects\2018\18230-WR-Social Circle Gen Svcs\dwg\18230\_PER Maps 2023.dwg



**PRECISION**  
Planning Inc.  
planners • engineers • architects • surveyors  
400 Pike Boulevard, Lawrenceville, Ga 30046  
770.338.8000 • www.ppi.us

2023 DWSRF CITY OF SOCIAL  
CIRCLE WATER SYSTEM  
IMPROVEMENTS

UTILITY MAP		
Land lot:	District:	Date: 08/01/23
County: WALTON		MAP 3.2
Drawn By: DMP	Field By:	
Checked By: AJG		
Job #: E18230	Scale: 1" = 600'	



PROPOSED 12" WATER MAIN TO TIE INTO EX. 12" WATER MAIN  
 ABANDON EX. 6" WATER MAIN

0.15MG ELEVATED STORAGE TANK

S. CHEROKEE RD. / SPRING ST.

W:\Projects\2018\18230-WR-Social Circle Gen Svcs\dwg\18230\_PER Maps 2023.dwg

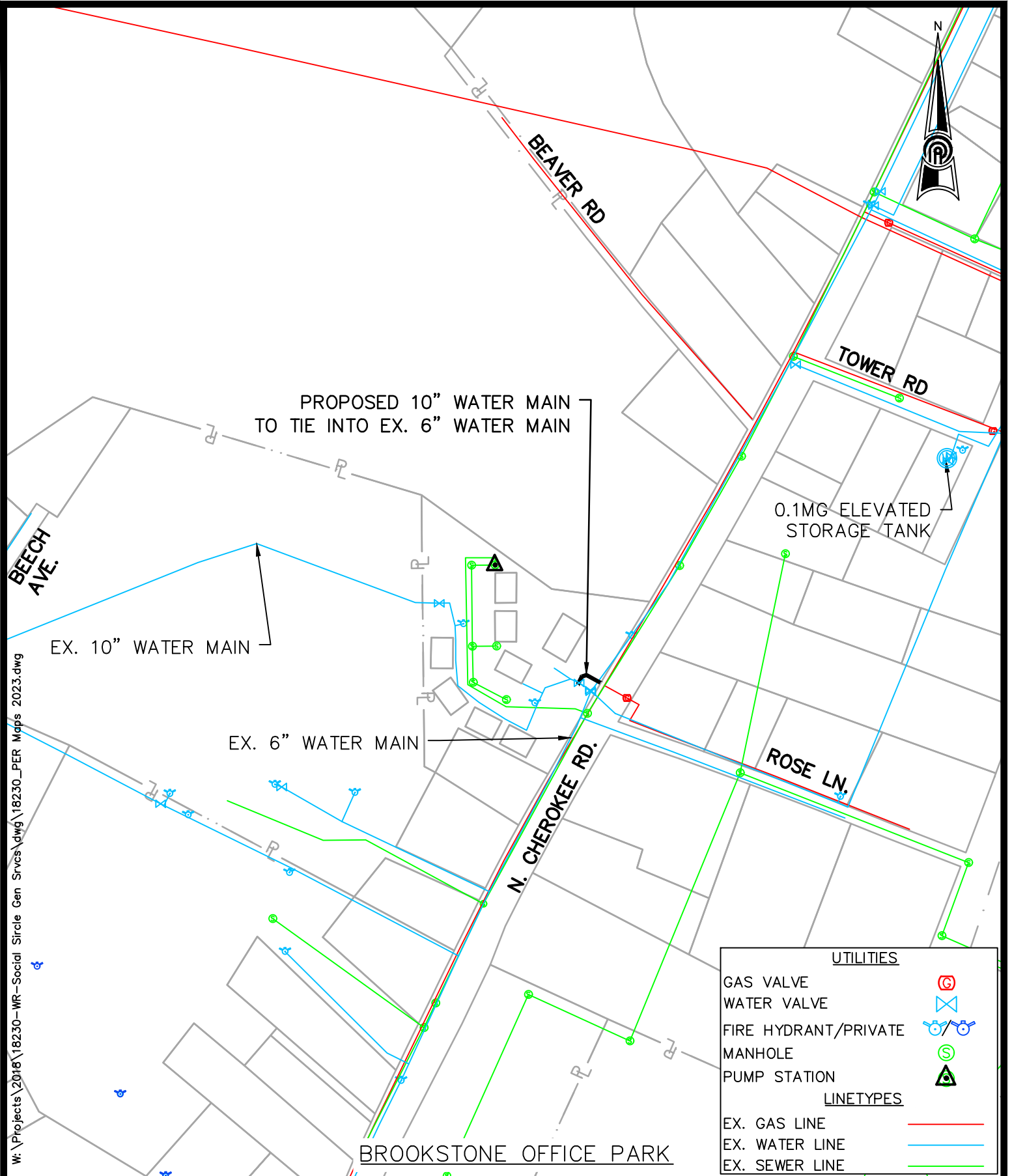
UTILITIES	
GAS VALVE	
WATER VALVE	
FIRE HYDRANT	
MANHOLE	
PUMP STATION	
LINETYPES	
EX. GAS LINE	
EX. WATER LINE	
EX. SEWER LINE	

**PRECISION**  
 Planning Inc.  
 planners • engineers • architects • surveyors  
 400 Pike Boulevard, Lawrenceville, Ga 30046  
 770.338.8000 • www.ppi.us

2023 DWSRF CITY OF SOCIAL  
 CIRCLE WATER SYSTEM  
 IMPROVEMENTS

UTILITY MAP		
Land lot:	District:	Date: 08/01/23
County: WALTON	Drawn By: DMP	Field By:
Checked By: AJG	Job #: E18230	Scale: 1" = 400'
		MAP 3.3





W:\Projects\2018\18230-WR-Social Circle Gen Svcs\dwg\18230\_PER Maps 2023.dwg



UTILITIES	
GAS VALVE	
WATER VALVE	
FIRE HYDRANT/PRIVATE MANHOLE	
PUMP STATION	
LINETYPES	
EX. GAS LINE	
EX. WATER LINE	
EX. SEWER LINE	

**PRECISION**  
Planning Inc.

planners • engineers • architects • surveyors

400 Pike Boulevard, Lawrenceville, Ga 30046  
770.338.8000 • www.ppi.us

2023 DWSRF CITY OF SOCIAL  
CIRCLE WATER SYSTEM  
IMPROVEMENTS

UTILITY MAP		
Land lot:	District:	Date: 08/01/23
County: WALTON	Drawn By: DMP	Field By:
Checked By: AJG	Job #: E18230	Scale: 1" = 250'
		MAP 3.4

W:\Projects\2018\18230-WR-Social Circle Gen Svcs\dwg\18230\_PER Maps 2023.dwg



ALCOVY RIVER

JERSEY SOCIAL CIRCLE RD.

RICHLAND CREEK

PROPOSED ELECTRICAL & SCADA IMPROVEMENTS

1.0MGD WATER TREATMENT PLANT

EX. 12" WATER MAIN

WATER TREATMENT PLANT

UTILITIES

WATER VALVE



FIRE HYDRANT



LINETYPES

EX. GAS LINE



EX. WATER LINE



planners • engineers • architects • surveyors

400 Pike Boulevard, Lawrenceville, Ga 30046  
770.338.8000 • www.ppi.us

2023 DWSRF CITY OF SOCIAL CIRCLE WATER SYSTEM IMPROVEMENTS

UTILITY MAP

Land lot:	District:	Date: 08/01/23
County: WALTON		MAP 3.5
Drawn By: DMP	Field By:	
Checked By: AJG		
Job #: E18230	Scale: 1" = 200'	

**Exhibit 3: Proposed Facilities Layout on Quad Map**

**SOCIAL CIRCLE 2023 WATER SYSTEM IMPROVEMENTS  
GEFA DWSRF LOAN APPLICATION**

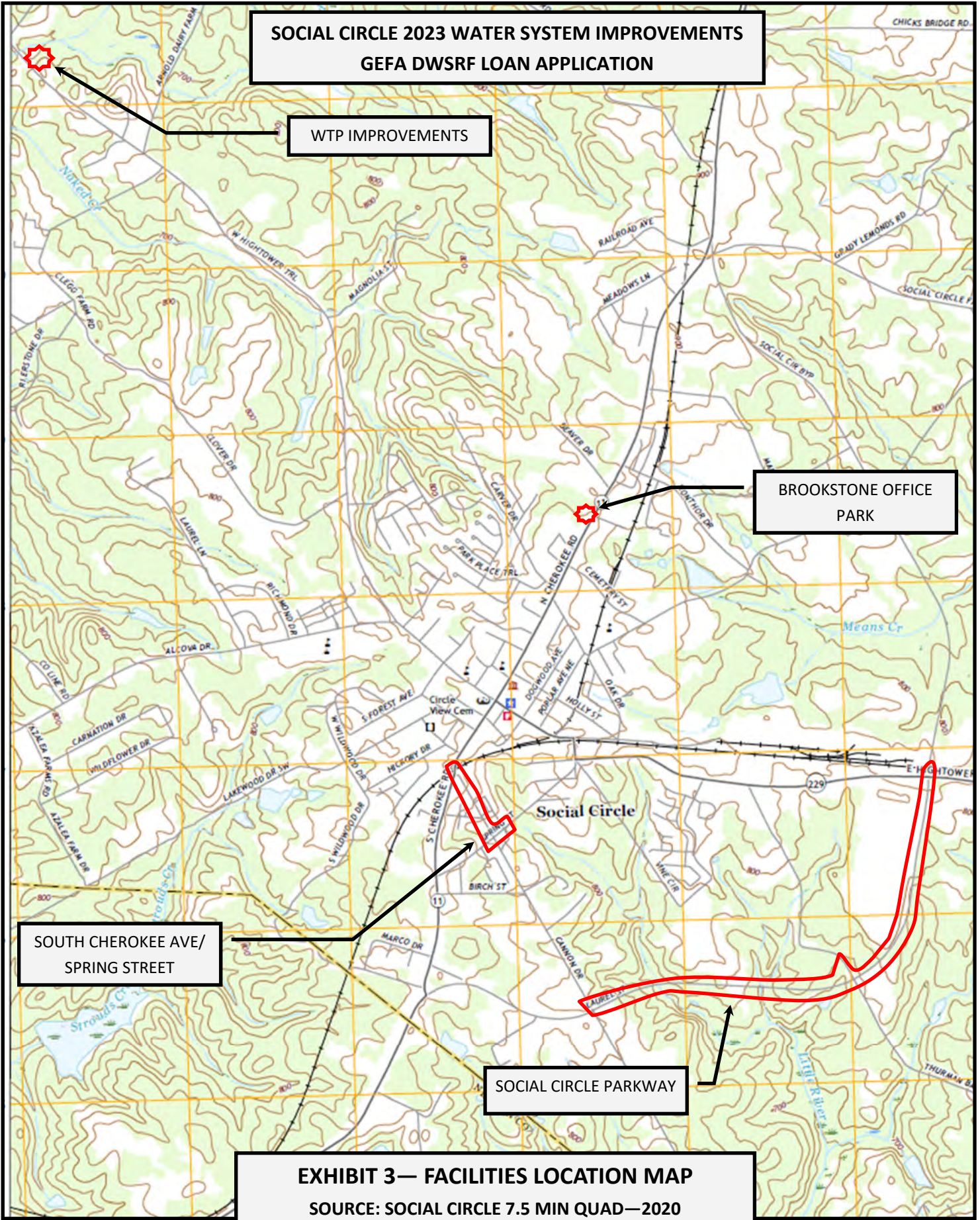
WTP IMPROVEMENTS

BROOKSTONE OFFICE  
PARK

SOUTH CHEROKEE AVE/  
SPRING STREET

SOCIAL CIRCLE PARKWAY

**EXHIBIT 3— FACILITIES LOCATION MAP**  
SOURCE: SOCIAL CIRCLE 7.5 MIN QUAD—2020



**Exhibit 4: Flood Plain Maps**

# National Flood Hazard Layer FIRMMette



83°45'20"W 33°41'51"N



Basemap: USGS National Map: Orthoimagery: Data refreshed October, 2020

83°44'43"W 33°41'21"N

## Legend

SEE FIS REPORT FOR DETAILED LEGEND AND INDEX MAP FOR FIRM PANEL LAYOUT

SPECIAL FLOOD HAZARD AREAS		Without Base Flood Elevation (BFE) <i>Zone A, V, A99</i>
		With BFE or Depth <i>Zone AE, AO, AH, VE, AR</i>
		Regulatory Floodway
OTHER AREAS OF FLOOD HAZARD		0.2% Annual Chance Flood Hazard, Areas of 1% annual chance flood with average depth less than one foot or with drainage areas of less than one square mile <i>Zone X</i>
		Future Conditions 1% Annual Chance Flood Hazard <i>Zone X</i>
		Area with Reduced Flood Risk due to Levee. See Notes. <i>Zone X</i>
		Area with Flood Risk due to Levee <i>Zone D</i>
OTHER AREAS		NO SCREEN Area of Minimal Flood Hazard <i>Zone X</i>
		Effective LOMRs
GENERAL STRUCTURES		Area of Undetermined Flood Hazard <i>Zone D</i>
		Channel, Culvert, or Storm Sewer
		Levee, Dike, or Floodwall
OTHER FEATURES		20.2 Cross Sections with 1% Annual Chance
		17.5 Water Surface Elevation
		Coastal Transect
		Base Flood Elevation Line (BFE)
		Limit of Study
MAP PANELS		Jurisdiction Boundary
		Coastal Transect Baseline
		Profile Baseline
		Hydrographic Feature
		Digital Data Available
		No Digital Data Available
		Unmapped
		The pin displayed on the map is an approximate point selected by the user and does not represent an authoritative property location.



This map complies with FEMA's standards for the use of digital flood maps if it is not void as described below. The basemap shown complies with FEMA's basemap accuracy standards

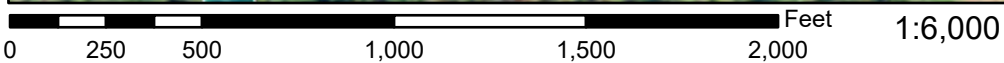
The flood hazard information is derived directly from the authoritative NFHL web services provided by FEMA. This map was exported on **11/17/2022 at 5:31 PM** and does not reflect changes or amendments subsequent to this date and time. The NFHL and effective information may change or become superseded by new data over time.

This map image is void if the one or more of the following map elements do not appear: basemap imagery, flood zone labels, legend, scale bar, map creation date, community identifiers, FIRM panel number, and FIRM effective date. Map images for unmapped and unmodernized areas cannot be used for regulatory purposes.

# National Flood Hazard Layer FIRMMette



83°42'2"W 33°38'43"N



Basemap: USGS National Map: Orthoimagery: Data refreshed October, 2020

## Legend

SEE FIS REPORT FOR DETAILED LEGEND AND INDEX MAP FOR FIRM PANEL LAYOUT

SPECIAL FLOOD HAZARD AREAS		Without Base Flood Elevation (BFE) <i>Zone A, V, A99</i>
		With BFE or Depth <i>Zone AE, AO, AH, VE, AR</i>
		Regulatory Floodway
OTHER AREAS OF FLOOD HAZARD		0.2% Annual Chance Flood Hazard, Areas of 1% annual chance flood with average depth less than one foot or with drainage areas of less than one square mile <i>Zone X</i>
		Future Conditions 1% Annual Chance Flood Hazard <i>Zone X</i>
		Area with Reduced Flood Risk due to Levee. See Notes. <i>Zone X</i>
		Area with Flood Risk due to Levee <i>Zone D</i>
OTHER AREAS		NO SCREEN Area of Minimal Flood Hazard <i>Zone X</i>
		Effective LOMRs
GENERAL STRUCTURES		Area of Undetermined Flood Hazard <i>Zone D</i>
		Channel, Culvert, or Storm Sewer
		Levee, Dike, or Floodwall
OTHER FEATURES		20.2 Cross Sections with 1% Annual Chance Water Surface Elevation
		17.5 Cross Sections with 1% Annual Chance Water Surface Elevation
		Coastal Transect
		Base Flood Elevation Line (BFE)
		Limit of Study
		Jurisdiction Boundary
MAP PANELS		Coastal Transect Baseline
		Profile Baseline
		Hydrographic Feature
		Digital Data Available
		No Digital Data Available
		Unmapped
		The pin displayed on the map is an approximate point selected by the user and does not represent an authoritative property location.



This map complies with FEMA's standards for the use of digital flood maps if it is not void as described below. The basemap shown complies with FEMA's basemap accuracy standards

The flood hazard information is derived directly from the authoritative NFHL web services provided by FEMA. This map was exported on **11/17/2022 at 5:24 PM** and does not reflect changes or amendments subsequent to this date and time. The NFHL and effective information may change or become superseded by new data over time.

This map image is void if the one or more of the following map elements do not appear: basemap imagery, flood zone labels, legend, scale bar, map creation date, community identifiers, FIRM panel number, and FIRM effective date. Map images for unmapped and unmodernized areas cannot be used for regulatory purposes.

# National Flood Hazard Layer FIRMette



83°43'39"W 33°39'3"N



Basemap: USGS National Map: Orthoimagery: Data refreshed October, 2020

## Legend

SEE FIS REPORT FOR DETAILED LEGEND AND INDEX MAP FOR FIRM PANEL LAYOUT

- |                                    |  |  |
|------------------------------------|--|--|
| <b>SPECIAL FLOOD HAZARD AREAS</b>  |  | Without Base Flood Elevation (BFE)<br><i>Zone A, V, A99</i>  |
|                                    |  | With BFE or Depth <i>Zone AE, AO, AH, VE, AR</i>   |
|                                    |  | Regulatory Floodway  |
| <b>OTHER AREAS OF FLOOD HAZARD</b> |  | 0.2% Annual Chance Flood Hazard, Areas of 1% annual chance flood with average depth less than one foot or with drainage areas of less than one square mile <i>Zone X</i> |
|                                    |  | Future Conditions 1% Annual Chance Flood Hazard <i>Zone X</i>  |
|                                    |  | Area with Reduced Flood Risk due to Levee. See Notes. <i>Zone X</i>  |
|                                    |  | Area with Flood Risk due to Levee <i>Zone D</i>  |
| <b>OTHER AREAS</b>                 |  | NO SCREEN Area of Minimal Flood Hazard <i>Zone X</i>   |
|                                    |  | Effective LOMRs  |
| <b>GENERAL STRUCTURES</b>          |  | Area of Undetermined Flood Hazard <i>Zone D</i>  |
|                                    |  | Channel, Culvert, or Storm Sewer   |
|                                    |  | Levee, Dike, or Floodwall  |
| <b>OTHER FEATURES</b>              |  | 20.2 Cross Sections with 1% Annual Chance Water Surface Elevation  |
|                                    |  | 17.5 Cross Sections with 1% Annual Chance Water Surface Elevation  |
|                                    |  | Coastal Transect   |
|                                    |  | Base Flood Elevation Line (BFE)  |
|                                    |  | Limit of Study   |
| <b>MAP PANELS</b>                  |  | Jurisdiction Boundary  |
|                                    |  | Coastal Transect Baseline  |
|                                    |  | Profile Baseline   |
|                                    |  | Hydrographic Feature   |
|                                    |  | Digital Data Available   |
|                                    |  | No Digital Data Available  |
|                                    |  | Unmapped   |
|                                    |  | The pin displayed on the map is an approximate point selected by the user and does not represent an authoritative property location.                                     |



This map complies with FEMA's standards for the use of digital flood maps if it is not void as described below. The basemap shown complies with FEMA's basemap accuracy standards

The flood hazard information is derived directly from the authoritative NFHL web services provided by FEMA. This map was exported on **11/17/2022 at 5:23 PM** and does not reflect changes or amendments subsequent to this date and time. The NFHL and effective information may change or become superseded by new data over time.

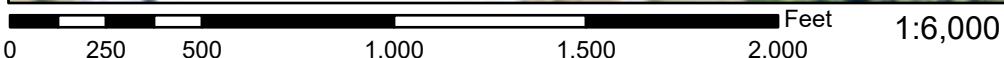
This map image is void if the one or more of the following map elements do not appear: basemap imagery, flood zone labels, legend, scale bar, map creation date, community identifiers, FIRM panel number, and FIRM effective date. Map images for unmapped and unmodernized areas cannot be used for regulatory purposes.



# National Flood Hazard Layer FIRMMette



83°41'44"W 33°39'22"N



83°41'7"W 33°38'52"N

Basemap: USGS National Map: Orthoimagery: Data refreshed October, 2020

## Legend

SEE FIS REPORT FOR DETAILED LEGEND AND INDEX MAP FOR FIRM PANEL LAYOUT

SPECIAL FLOOD HAZARD AREAS		Without Base Flood Elevation (BFE) <i>Zone A, V, A99</i>
		With BFE or Depth <i>Zone AE, AO, AH, VE, AR</i>
		Regulatory Floodway
OTHER AREAS OF FLOOD HAZARD		0.2% Annual Chance Flood Hazard, Areas of 1% annual chance flood with average depth less than one foot or with drainage areas of less than one square mile <i>Zone X</i>
		Future Conditions 1% Annual Chance Flood Hazard <i>Zone X</i>
		Area with Reduced Flood Risk due to Levee. See Notes. <i>Zone X</i>
		Area with Flood Risk due to Levee <i>Zone D</i>
OTHER AREAS		NO SCREEN Area of Minimal Flood Hazard <i>Zone X</i>
		Effective LOMRs
GENERAL STRUCTURES		Area of Undetermined Flood Hazard <i>Zone D</i>
		Channel, Culvert, or Storm Sewer
		Levee, Dike, or Floodwall
OTHER FEATURES		20.2 Cross Sections with 1% Annual Chance Water Surface Elevation
		17.5 Coastal Transect
		Base Flood Elevation Line (BFE)
		Limit of Study
		Jurisdiction Boundary
MAP PANELS		Coastal Transect Baseline
		Profile Baseline
		Hydrographic Feature
		Digital Data Available
		No Digital Data Available
		Unmapped

The pin displayed on the map is an approximate point selected by the user and does not represent an authoritative property location.



This map complies with FEMA's standards for the use of digital flood maps if it is not void as described below. The basemap shown complies with FEMA's basemap accuracy standards

The flood hazard information is derived directly from the authoritative NFHL web services provided by FEMA. This map was exported on **11/17/2022 at 5:25 PM** and does not reflect changes or amendments subsequent to this date and time. The NFHL and effective information may change or become superseded by new data over time.

This map image is void if the one or more of the following map elements do not appear: basemap imagery, flood zone labels, legend, scale bar, map creation date, community identifiers, FIRM panel number, and FIRM effective date. Map images for unmapped and unmodernized areas cannot be used for regulatory purposes.

# National Flood Hazard Layer FIRMMette



83°43'3"W 33°40'14"N



83°42'25"W 33°39'44"N

Basemap: USGS National Map: Orthoimagery: Data refreshed October, 2020

## Legend

SEE FIS REPORT FOR DETAILED LEGEND AND INDEX MAP FOR FIRM PANEL LAYOUT

SPECIAL FLOOD HAZARD AREAS		Without Base Flood Elevation (BFE) <i>Zone A, V, A99</i>
		With BFE or Depth <i>Zone AE, AO, AH, VE, AR</i>
		Regulatory Floodway
OTHER AREAS OF FLOOD HAZARD		0.2% Annual Chance Flood Hazard, Areas of 1% annual chance flood with average depth less than one foot or with drainage areas of less than one square mile <i>Zone X</i>
		Future Conditions 1% Annual Chance Flood Hazard <i>Zone X</i>
		Area with Reduced Flood Risk due to Levee. See Notes. <i>Zone X</i>
		Area with Flood Risk due to Levee <i>Zone D</i>
OTHER AREAS		NO SCREEN Area of Minimal Flood Hazard <i>Zone X</i>
		Effective LOMRs
GENERAL STRUCTURES		Area of Undetermined Flood Hazard <i>Zone D</i>
		Channel, Culvert, or Storm Sewer
		Levee, Dike, or Floodwall
OTHER FEATURES		20.2 Cross Sections with 1% Annual Chance
		17.5 Water Surface Elevation
		8 Coastal Transect
		Base Flood Elevation Line (BFE)
		Limit of Study
MAP PANELS		Jurisdiction Boundary
		Coastal Transect Baseline
		Profile Baseline
		Hydrographic Feature
		Digital Data Available
		No Digital Data Available
		Unmapped
		The pin displayed on the map is an approximate point selected by the user and does not represent an authoritative property location.



This map complies with FEMA's standards for the use of digital flood maps if it is not void as described below. The basemap shown complies with FEMA's basemap accuracy standards

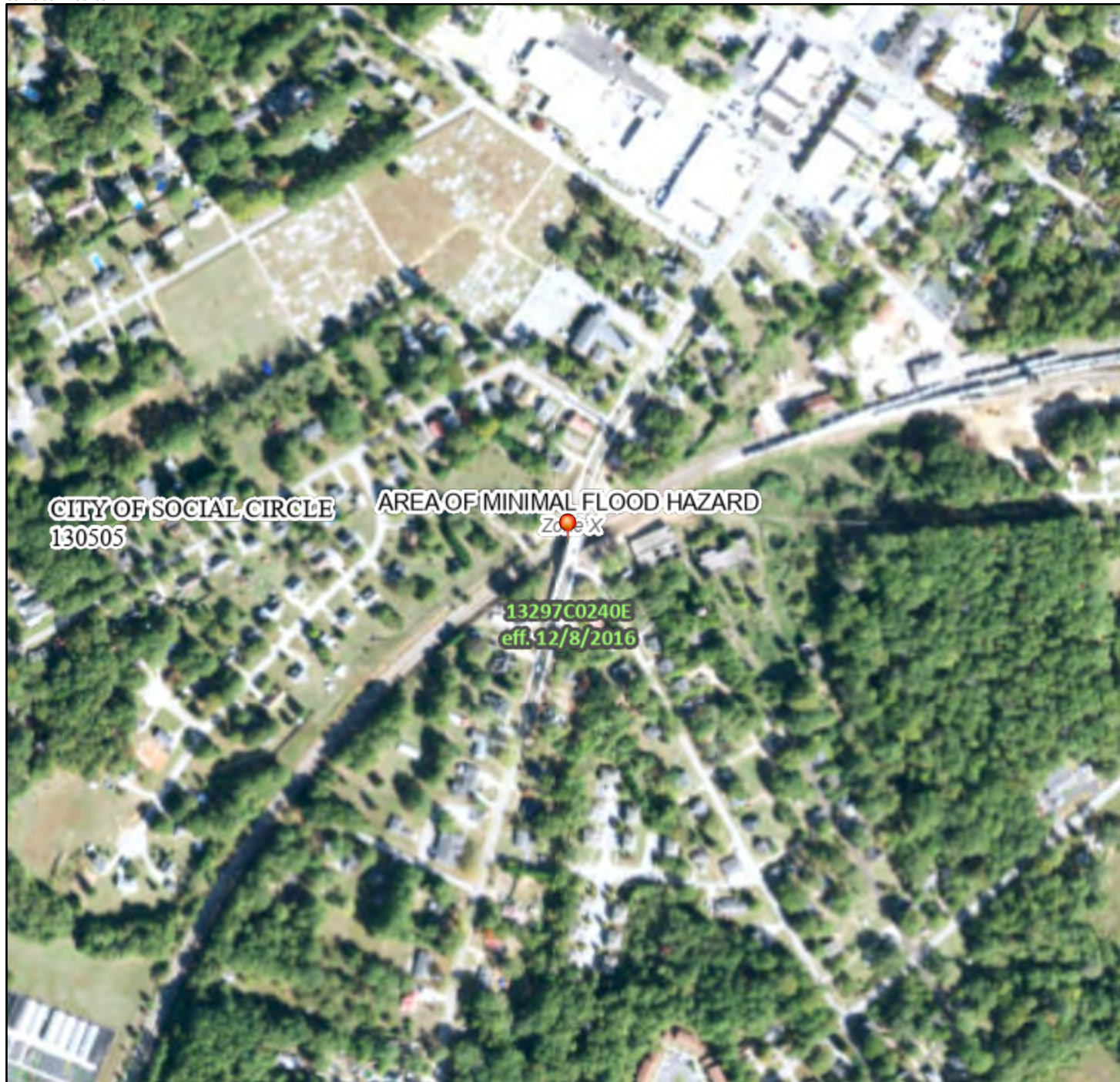
The flood hazard information is derived directly from the authoritative NFHL web services provided by FEMA. This map was exported on **11/17/2022 at 5:42 PM** and does not reflect changes or amendments subsequent to this date and time. The NFHL and effective information may change or become superseded by new data over time.

This map image is void if the one or more of the following map elements do not appear: basemap imagery, flood zone labels, legend, scale bar, map creation date, community identifiers, FIRM panel number, and FIRM effective date. Map images for unmapped and unmodernized areas cannot be used for regulatory purposes.

# National Flood Hazard Layer FIRMMette



83°43'35"W 33°39'24"N



83°42'58"W 33°38'54"N

Basemap: USGS National Map: Orthoimagery: Data refreshed October, 2020

## Legend

SEE FIS REPORT FOR DETAILED LEGEND AND INDEX MAP FOR FIRM PANEL LAYOUT

SPECIAL FLOOD HAZARD AREAS		Without Base Flood Elevation (BFE) <i>Zone A, V, A99</i>
		With BFE or Depth <i>Zone AE, AO, AH, VE, AR</i>
		Regulatory Floodway
OTHER AREAS OF FLOOD HAZARD		0.2% Annual Chance Flood Hazard, Areas of 1% annual chance flood with average depth less than one foot or with drainage areas of less than one square mile <i>Zone X</i>
		Future Conditions 1% Annual Chance Flood Hazard <i>Zone X</i>
		Area with Reduced Flood Risk due to Levee. See Notes. <i>Zone X</i>
		Area with Flood Risk due to Levee <i>Zone D</i>
OTHER AREAS		NO SCREEN Area of Minimal Flood Hazard <i>Zone X</i>
		Effective LOMRs
GENERAL STRUCTURES		Area of Undetermined Flood Hazard <i>Zone D</i>
		Channel, Culvert, or Storm Sewer
OTHER FEATURES		Levee, Dike, or Floodwall
		20.2 Cross Sections with 1% Annual Chance Water Surface Elevation
MAP PANELS		17.5 Coastal Transect
		Base Flood Elevation Line (BFE)
		Limit of Study
		Jurisdiction Boundary
		Coastal Transect Baseline
		Profile Baseline
MAP PANELS		Digital Data Available
		No Digital Data Available
		Unmapped
		The pin displayed on the map is an approximate point selected by the user and does not represent an authoritative property location.



This map complies with FEMA's standards for the use of digital flood maps if it is not void as described below. The basemap shown complies with FEMA's basemap accuracy standards

The flood hazard information is derived directly from the authoritative NFHL web services provided by FEMA. This map was exported on **11/17/2022 at 5:26 PM** and does not reflect changes or amendments subsequent to this date and time. The NFHL and effective information may change or become superseded by new data over time.

This map image is void if the one or more of the following map elements do not appear: basemap imagery, flood zone labels, legend, scale bar, map creation date, community identifiers, FIRM panel number, and FIRM effective date. Map images for unmapped and unmodernized areas cannot be used for regulatory purposes.

**Exhibit 5: Wetlands Maps**



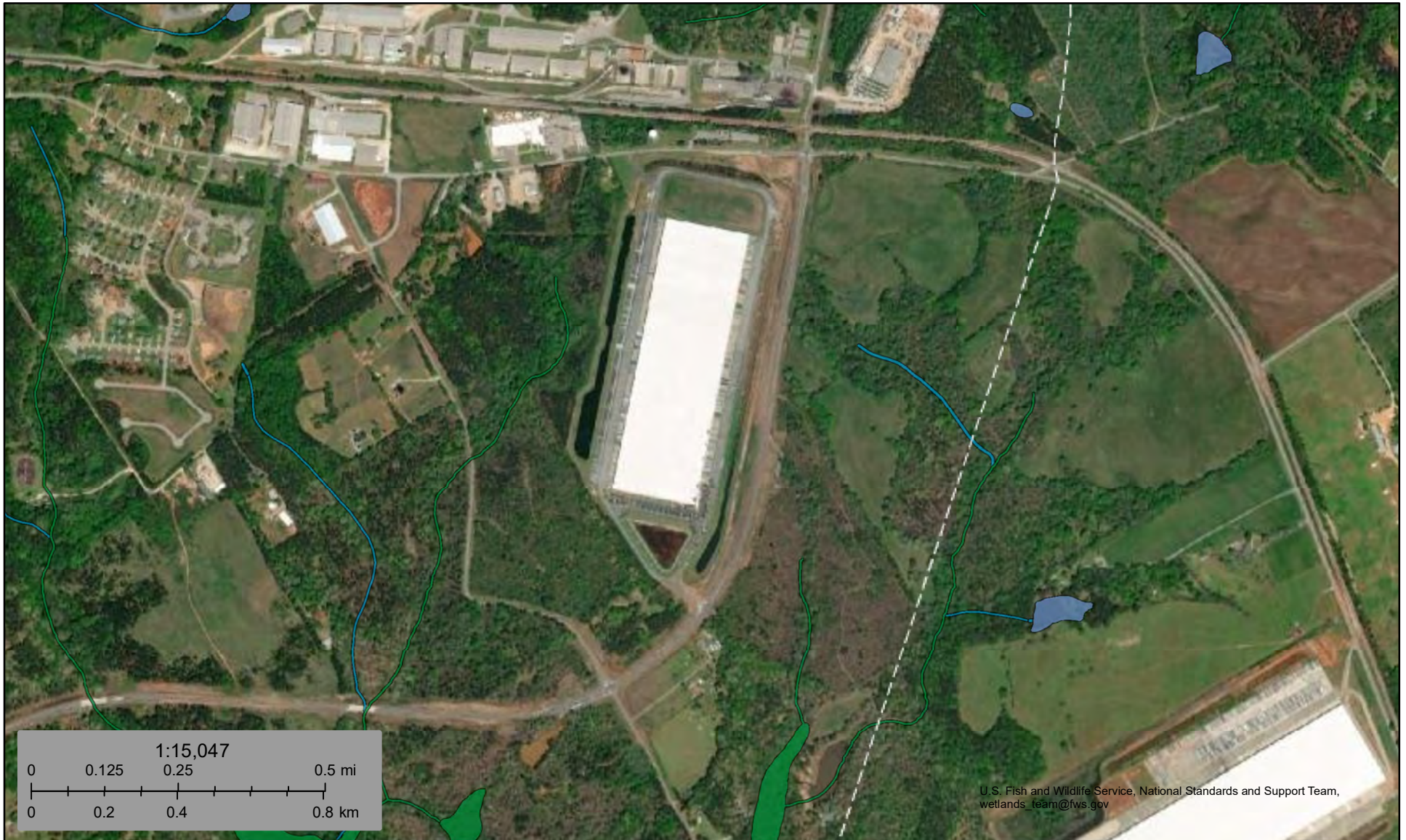
U.S. Fish and Wildlife Service, National Standards and Support Team, wetlands\_team@fws.gov

November 17, 2022

**Wetlands**



- Estuarine and Marine Deepwater
- Freshwater Emergent Wetland
- Lake
- Estuarine and Marine Wetland
- Freshwater Forested/Shrub Wetland
- Other
- Freshwater Pond
- Riverine

This map is for general reference only. The US Fish and Wildlife Service is not responsible for the accuracy or currentness of the base data shown on this map. All wetlands related data should be used in accordance with the layer metadata found on the Wetlands Mapper web site.

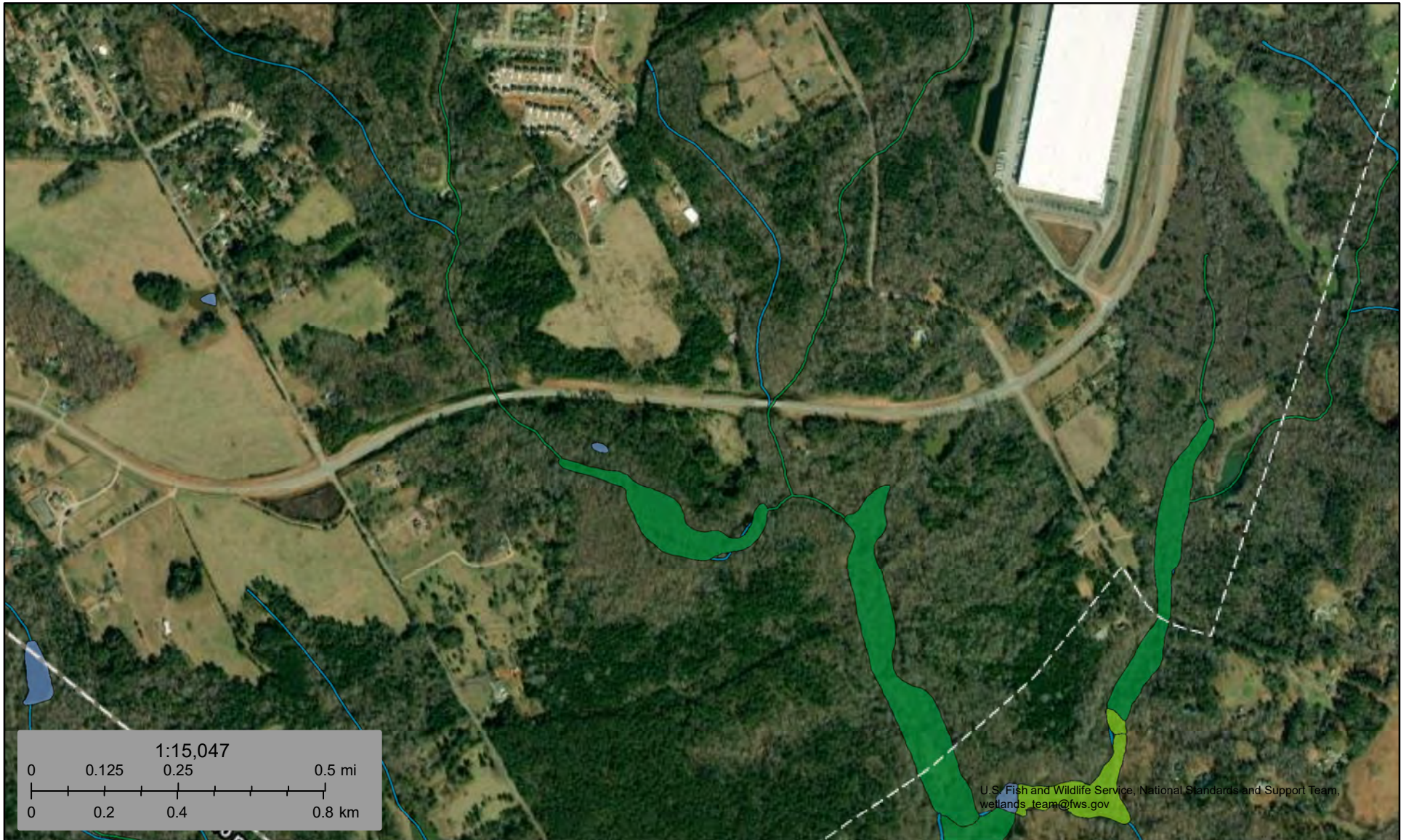


November 17, 2022

**Wetlands**









- |   |                                |   |                                   |   |          |
|---|--------------------------------|---|-----------------------------------|---|----------|
|  | Estuarine and Marine Deepwater |  | Freshwater Emergent Wetland       |  | Lake     |
|  | Estuarine and Marine Wetland   |  | Freshwater Forested/Shrub Wetland |  | Other    |
|   |                                |  | Freshwater Pond                   |  | Riverine |

This map is for general reference only. The US Fish and Wildlife Service is not responsible for the accuracy or currentness of the base data shown on this map. All wetlands related data should be used in accordance with the layer metadata found on the Wetlands Mapper web site.

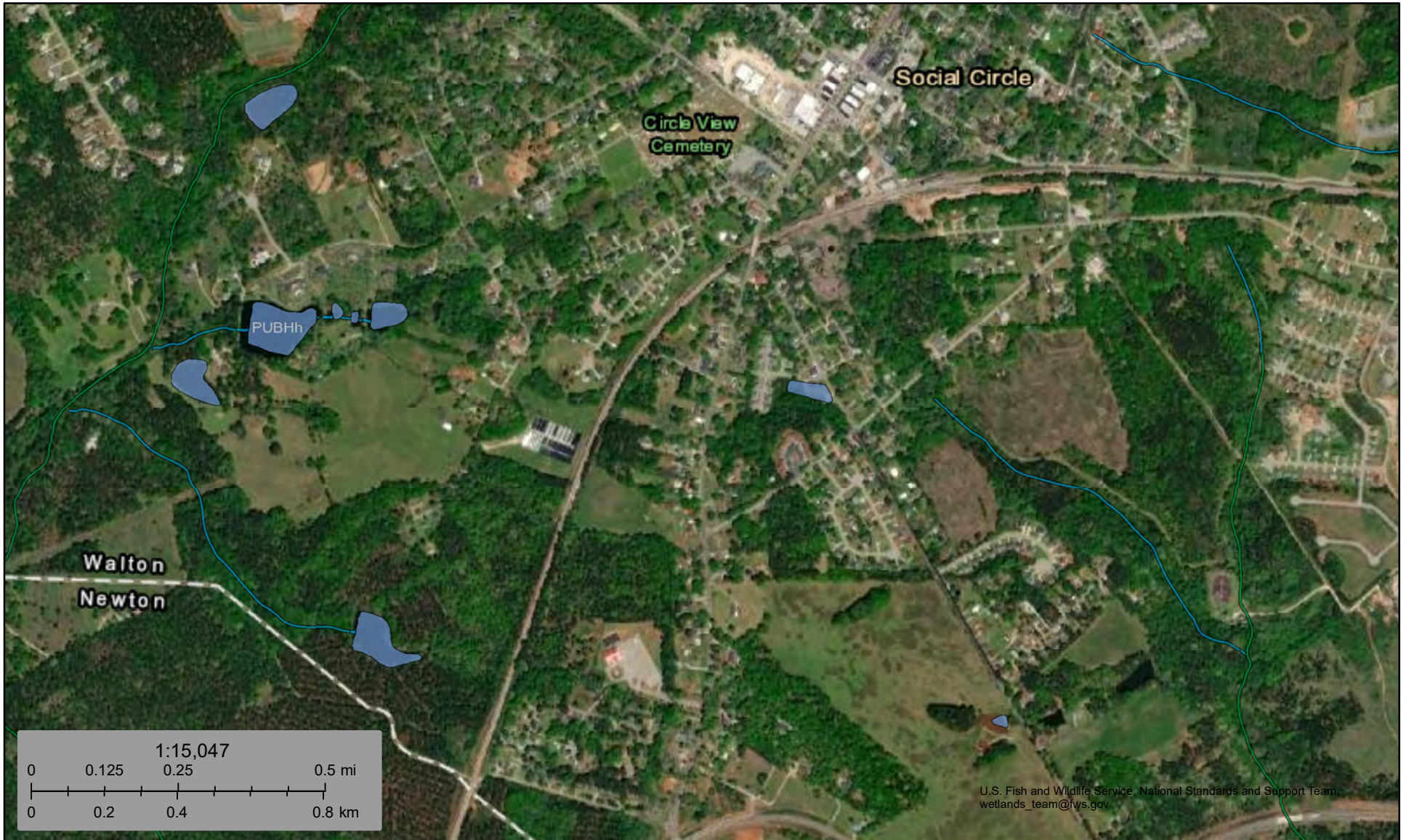


July 28, 2023

### Wetlands

- |   |                                |   |                                   |   |          |
|---|--------------------------------|---|-----------------------------------|---|----------|
|  | Estuarine and Marine Deepwater |  | Freshwater Emergent Wetland       |  | Lake     |
|  | Estuarine and Marine Wetland   |  | Freshwater Forested/Shrub Wetland |  | Other    |
|   |                                |  | Freshwater Pond                   |  | Riverine |

This map is for general reference only. The US Fish and Wildlife Service is not responsible for the accuracy or currentness of the base data shown on this map. All wetlands related data should be used in accordance with the layer metadata found on the Wetlands Mapper web site.



November 17, 2022

**Wetlands**

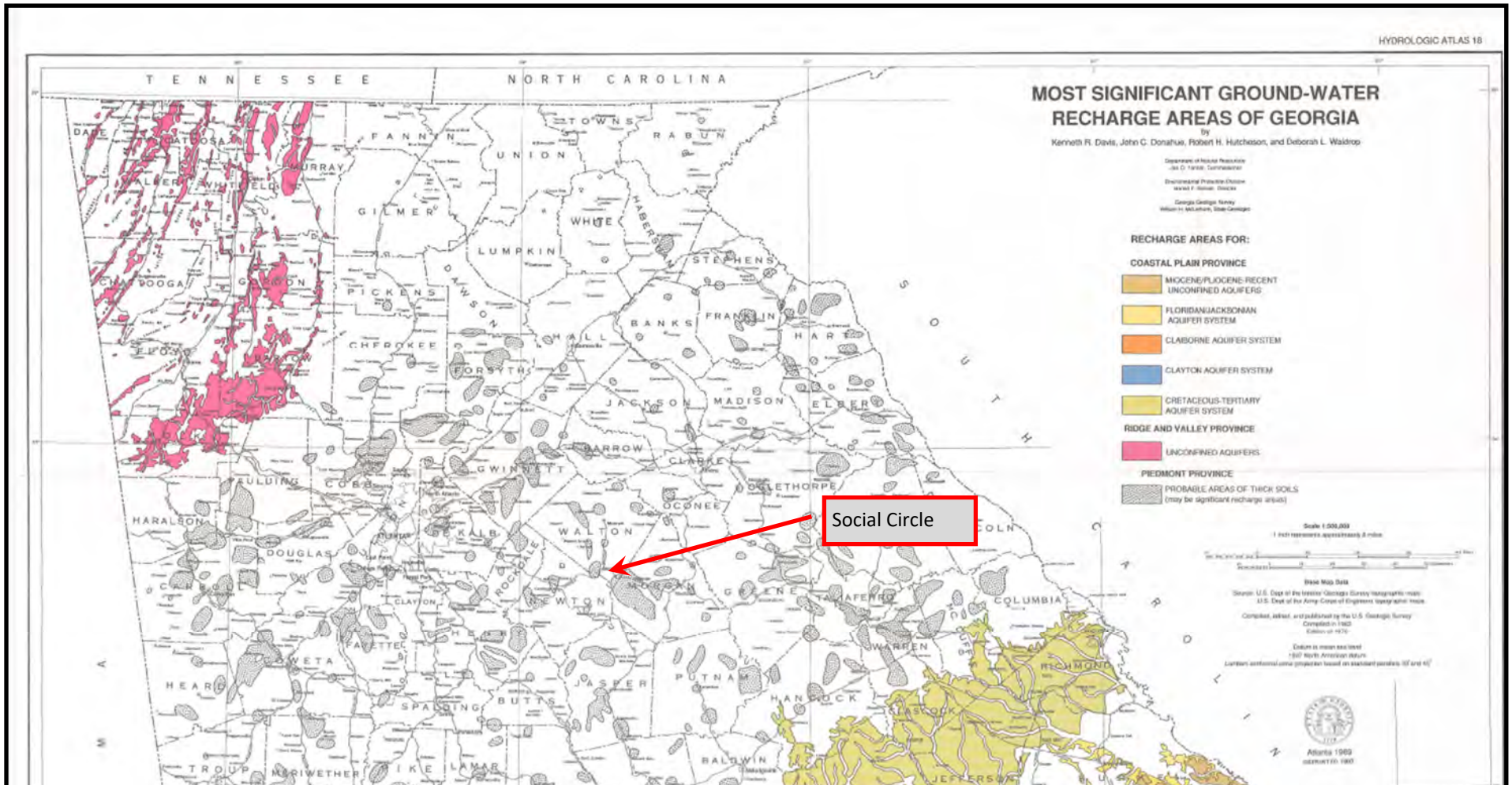
- Estuarine and Marine Deepwater
- Freshwater Emergent Wetland
- Lake
- Estuarine and Marine Wetland
- Freshwater Forested/Shrub Wetland
- Other
- Freshwater Pond
- Riverine

This map is for general reference only. The US Fish and Wildlife Service is not responsible for the accuracy or currentness of the base data shown on this map. All wetlands related data should be used in accordance with the layer metadata found on the Wetlands Mapper web site.



**Exhibit 6: Significant Groundwater Recharge Areas**

**SOCIAL CIRCLE 2023 WATER SYSTEM IMPROVEMENTS  
GEFA DWSRF LOAN APPLICATION**

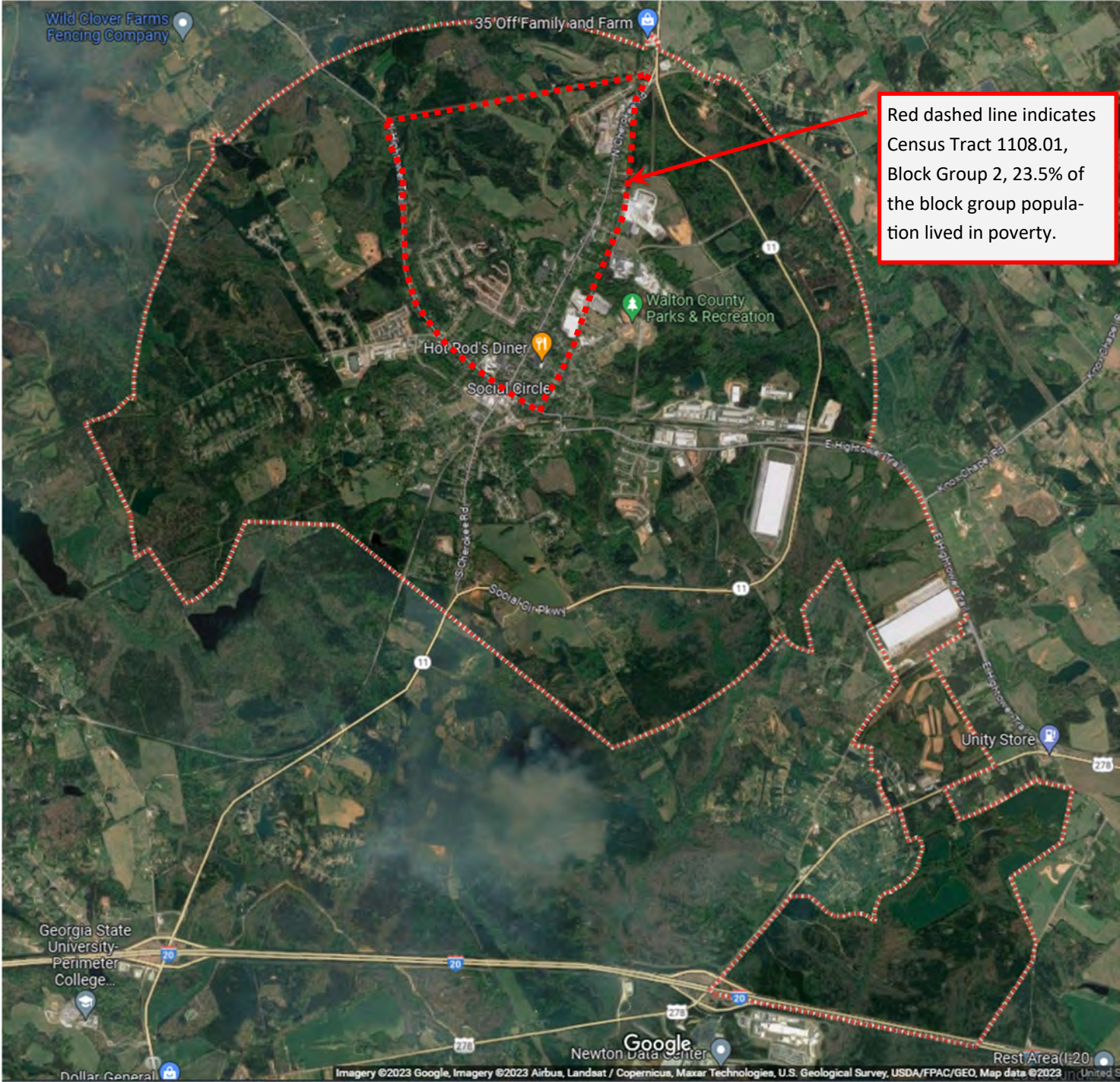


**EXHIBIT 6— GROUNDWATER RECHARGE AREAS**

SOURCE: Georgia Hydrologic Atlas-18, 1992

**Exhibit 7: Map of Low Income Households in Project Area**

**SOCIAL CIRCLE 2023 WATER SYSTEM IMPROVEMENTS  
GEFA DWSRF LOAN APPLICATION**



**EXHIBIT 7— LOW INCOME AREAS**  
SOURCE: US Census 2020 ACS

**APPENDIX B**

**INTERAGENCY REVIEW DOCUMENTATION**

**Contents:**

November 16, 2022 PPI Letter to USFWS (no attachments)

December 7, 2022 Response from USFWS

November 16, 2022 PPI Letter to HPD (no attachments)

December 13, 2022 Response from HPD

November 16, 2022 PPI Letter to WRD (no attachments)

December 6, 2019 Response from WRD

November 17, 2022 PPI Letter to USACE (no attachments)

December 2, 2022 Response from USACE



November 16, 2022

Peter Maholland, Deputy Field Supervisor  
U.S. Fish and Wildlife Service  
Georgia Ecological Services Field Office  
355 East Hancock Avenue, Room 320  
Athens, GA 30601  
Email: [peter.maholland@dnr.ga.gov](mailto:peter.maholland@dnr.ga.gov)

**RE: Social Circle 2022 Water System Improvements  
Walton County, Georgia**

Dear Mr. Maholland:

We are required to submit project planning documents to the Georgia Environmental Protection Division (EPD) for projects that are to be funded under the federal Drinking Water State Revolving Fund (DWSRF). As part of the review process, EPD requires that the project planning documents undergo an interdisciplinary review process. The goal of the review is to assess potential impacts on the environment that may result from the proposed project. This includes issues related to threatened or endangered species in the vicinity of the project.

We are required to submit the project planning documents to your agency, under the State Environmental Review Procedures (SERP) agreed to by the USEPA. Before issuing a "Notice of No Significant Impact" (NONSI) for the project, EPD requires a comment letter from your agency.

To allow the issuance of NONSI, please review and comment on the attached documents within 30 Days. Your comment letter will be included as part of the Environmental Information Document (EID) to be submitted to EPD for review and issuance of a NONSI. **To enable the project to move forward, please issue your comment letter even if you have no comments.** If you choose, and if you have no comments, you may just check the "no comments" box below, and then either stamp this letter with your agency's stamp or sign and date it at the space provided and return this letter to the address below.

The following exhibits are attached herein for use in your review:

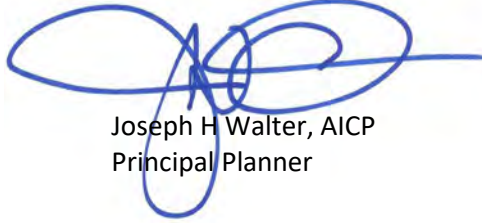
- |           |   |
|-----------|---|
| Exhibit 1 | Specific Project Information.   |
| Exhibit 2 | Georgia Department of Transportation map showing location of project site within Walton County. |
| Exhibit 3 | USGS quad map showing location of the project's facilities.                                     |
| Exhibit 4 | Photographs of the project site.  |

Contact information for the project's engineer is as follows:

Name:	Joe Walter, Principal Planner
Address:	400 Pike Blvd, Lawrenceville, GA 30046
Phone:	(770) 338-8108
E-Mail:	<a href="mailto:jwalter@ppi.us">jwalter@ppi.us</a>

Thank you for your consideration.

Sincerely,



Joseph H. Walter, AICP  
Principal Planner

c File

\\3parwdoc\doc\DOCUMENT\18\230 - Social Circle General Services\18-230W\GEFA Loan Applications\2022 DWSRF Application\ENVIRONMENTAL DOCUMENT\INTERAGENCY LETTERS\USFWS 11-08-22.docx  
AJG/  
Attachments



NO COMMENTS (CHECK HERE)

Person Representing the Agency:

Printed Name \_\_\_\_\_

Signature \_\_\_\_\_

Date \_\_\_\_\_

November 16, 2022

Peter Maholland, Deputy Field Supervisor  
U.S. Fish and Wildlife Service  
Georgia Ecological Services Field Office  
355 East Hancock Avenue, Room 320  
Athens, GA 30601  
Email: [peter.maholland@dnr.ga.gov](mailto:peter.maholland@dnr.ga.gov)

**RE: Social Circle 2022 Water System Improvements  
Walton County, Georgia**

Dear Mr. Maholland:

We are required to submit project planning documents to the Georgia Environmental Protection Division (EPD) for projects that are to be funded under the federal Drinking Water State Revolving Fund (DWSRF). As part of the review process, EPD requires that the project planning documents undergo an interdisciplinary review process. The goal of the review is to assess potential impacts on the environment that may result from the proposed project. This includes issues related to threatened or endangered species in the vicinity of the project.

We are required to submit the project planning documents to your agency, under the State Environmental Review Procedures (SERP) agreed to by the USEPA. Before issuing a "Notice of No Significant Impact" (NONSI) for the project, EPD requires a comment letter from your agency.

To allow the issuance of NONSI, please review and comment on the attached documents within 30 Days. Your comment letter will be included as part of the Environmental Information Document (EID) to be submitted to EPD for review and issuance of a NONSI. **To enable the project to move forward, please issue your comment letter even if you have no comments.** If you choose, and if you have no comments, you may just check the "no comments" box below, and then either stamp this letter with your agency's stamp or sign and date it at the space provided and return this letter to the address below.

The following exhibits are attached herein for use in your review:

- |           |   |
|-----------|---|
| Exhibit 1 | Specific Project Information.   |
| Exhibit 2 | Georgia Department of Transportation map showing location of project site within Walton County. |
| Exhibit 3 | USGS quad map showing location of the project's facilities.                                     |
| Exhibit 4 | Photographs of the project site.  |

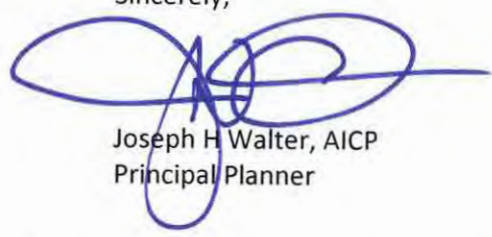
Contact information for the project's engineer is as follows:

Name: Joe Walter, Principal Planner  
Address: 400 Pike Blvd, Lawrenceville, GA 30046  
Phone: (770) 338-8108  
E-Mail: [jwalter@ppi.us](mailto:jwalter@ppi.us)



Thank you for your consideration.

Sincerely,



Joseph H. Walter, AICP  
Principal Planner

c File

\\3parwdoc\doc\DOCUMENT\18\230 - Social Circle General Services\18-230W\GEFA Loan Applications\2022 DWSRF Application\ENVIRONMENTAL DOCUMENT\INTERAGENCY LETTERS\USFWS 11-08-22.docx  
AJG/  
Attachments



NO COMMENTS (CHECK HERE)

Person Representing the Agency:

Printed Name \_\_\_\_\_

Signature \_\_\_\_\_

Date \_\_\_\_\_



**U. S. Fish and Wildlife Service**  
RG Stephens, Jr. Federal Building  
355 E. Hancock Ave, Room 320, Box 7  
Athens, GA 30601  
706-613-9493

NG-23-019-Walt  
FWS Log No.

Based on information you provided, no further action is required under S7(a)(2) of the Endangered Species Act. However, if new information or changes in the project involve federally-listed species, further consultation with the Service may be necessary.

  
Peter Maholland, Acting Deputy Field Supervisor

12/7/22  
Date



November 16, 2022

Jennifer Dixon, Division Director  
Environmental Review and Preservation Planning  
Historic Preservation Division (HPD)  
Georgia Department of Community Affairs  
60 Executive Park South, NE  
Atlanta, GA 30329  
Email: er@dca.ga.gov

**RE: Social Circle 2022 Water System Improvements  
Walton County, Georgia**

Dear Ms. Dixon:

We are required to submit project planning documents to the Georgia Environmental Protection Division (EPD) for projects that are to be funded under the federal Drinking Water State Revolving Fund (DWSRF). As part of the review process, EPD requires that the project planning documents undergo an interdisciplinary review process. The goal of the review is to assess potential impacts on the environment that may result from the proposed project. This includes issues related to historic properties or archaeological resources in the vicinity of the project.

We are required to submit the project planning documents to your agency, under the State Environmental Review Procedures (SERP) agreed to by the USEPA. Before issuing a "Notice of No Significant Impact" (NONSI) for the project, EPD requires a comment letter from your agency.

To allow the issuance of NONSI, please review and comment on the attached documents within 30 Days. Your comment letter will be included as part of the Environmental Information Document (EID) to be submitted to EPD for review and issuance of a NONSI. **To enable the project to move forward, please issue your comment letter even if you have no comments.** If you choose, and if you have no comments, you may just check the "no comments" box below, and then either stamp this letter with your agency's stamp or sign and date it at the space provided and return this letter to the address below.

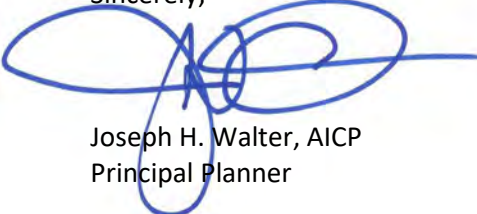
The following exhibits are attached herein for use in your review:

- |           |   |
|-----------|---|
| Exhibit 1 | Specific Project Information.   |
| Exhibit 2 | Georgia Department of Transportation map showing location of project site within Walton County. |
| Exhibit 3 | USGS quad map showing location of the project's facilities.                                     |
| Exhibit 4 | Photographs of the project site.  |

Contact information for the project's engineer is as follows:

Name:	Joe Walter, Principal Planner
Address:	400 Pike Blvd, Lawrenceville, GA 30046
Phone:	(770) 338-8108
E-Mail:	jwalter@ppi.us

Thank you for your consideration.

Sincerely,  
  
Joseph H. Walter, AICP  
Principal Planner

c File

\\3parwdoc\doc\DOCUMENT\18\230 - Social Circle General Services\18-230W\GEFA Loan Applications\2022 DWSRF Application\ENVIRONMENTAL DOCUMENT\INTERAGENCY LETTERS\HPD 11-08-22.docx  
AJG/  
Attachments



NO COMMENTS (CHECK HERE)

Person Representing the Agency:

Printed Name \_\_\_\_\_

Signature \_\_\_\_\_

Date \_\_\_\_\_

December 13, 2022

Joseph H. Walter  
Principal Planner  
Precision Planning, Inc.  
400 Pike Boulevard  
Lawrenceville, Georgia 30046

**RE: DWSRF: Water System Improvements, Various Locations, Social Circle  
Walton County, Georgia  
HP-221116-002**

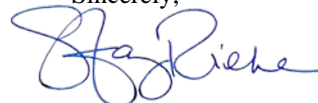
Dear Mr. Walter:

The Historic Preservation Division (HPD) has reviewed the information submitted concerning the above referenced project. Our comments are offered to assist the Environmental Protection Agency (EPA) and its applicants in complying with the provisions of Section 106 of the National Historic Preservation Act of 1966, as amended (NHPA). **In order for us to complete our review, we will need additional information.**

The subject project consists of abandoning and leaving in place and replacing approximately 6,500 linear feet (LF) of 6-inch (in.) water main line with 12-in. main, utilizing the jack and bore method, beginning at the Georgia Railroad (GAR) bridge (noted as CSX Railroad in the submittal) and running south on South Cherokee Road, turning east on Spring Street connecting to an existing 8-in main and the circa (ca.) 1985 elevated water tank on Walton County parcel SC090124 at Hill Avenue, installing a 12-in. line beginning at East Hightower Trail running south and then northward on Thurman Baccus Road connecting to existing 12-in. main at an unknown location, installing new valves and interconnections on the ca. 2005 parcel SC130117 at 719 North Cherokee Road, and making improvements to the existing ca. 1981 Water Treatment Plant (WTP) on parcel C1070010 at 2446 Jersey Social Circle Road, including electrical upgrades, installing new service panels and high service pumps, and Supervisory Control and Data Acquisition (SCADA) telemetry. **Based on the information provided and desktop research, HPD recommends conducting a Phase I archaeological survey for this project prior to the commencement of any ground disturbing activities. The survey should include all areas of ground-disturbing activity, in addition to any equipment staging areas, or newly constructed roadways that may be required to access the project area. The archaeological investigations should be conducted by a professional archaeologist that meets the Secretary of the Interior's Professional Qualification Standards and the survey methods should closely follow the Georgia Council of Professional Archaeologists recommended survey standards.**

We look forward to reviewing the requested information and working with you as this project progresses. Please refer to project number **HP-221116-002** in any future correspondence regarding this project. If we may be of further assistance, please do not hesitate to contact Michelle Bard, Environmental Review Historian, at [Michelle.Bard@dca.ga.gov](mailto:Michelle.Bard@dca.ga.gov) or Kofi Mustapha, Compliance Archaeologist, at [Kofi.Mustapha@dca.ga.gov](mailto:Kofi.Mustapha@dca.ga.gov) or (404) 486-6396.

Sincerely,



Stacy Rieke, MHP  
Program Manager  
Environmental Review & Preservation Planning

SMR/mlb

cc: Lydia Joffray, Northeast Georgia Regional Commission  
Beth Eavenson, DCA Regional Services, Region 5



November 16, 2022

Anna Yellin, Environmental Review Coordinator  
Georgia Department of Natural Resources  
Wildlife Resources Division  
2065 U.S. Highway 278 S.E.  
Social Circle, GA 30025

**RE: Social Circle 2022 Water System Improvements  
Walton County, Georgia**

Dear Ms. Yellin:

We are required to submit project planning documents to the Georgia Environmental Protection Division (EPD) for projects that are to be funded under the federal Drinking Water State Revolving Fund (DWSRF). As part of the review process, EPD requires that the project planning documents undergo an interdisciplinary review process. The goal of the review is to assess potential impacts on the environment that may result from the proposed project. This includes issues related to non-game threatened or endangered species in the vicinity of the project.

We are required to submit the project planning documents to your agency, under the State Environmental Review Procedures (SERP) agreed to by the USEPA. Before issuing a "Notice of No Significant Impact" (NONSI) for the project, EPD requires a comment letter from your agency.

To allow the issuance of NONSI, please review and comment on the attached documents within 30 Days. Your comment letter will be included as part of the Environmental Information Document (EID) to be submitted to EPD for review and issuance of a NONSI. **To enable the project to move forward, please issue your comment letter even if you have no comments.** If you choose, and if you have no comments, you may just check the "no comments" box below, and then either stamp this letter with your agency's stamp or sign and date it at the space provided and return this letter to the address below.

The following exhibits are attached herein for use in your review:

- |           |   |
|-----------|---|
| Exhibit 1 | Specific Project Information.   |
| Exhibit 2 | Georgia Department of Transportation map showing location of project site within Walton County. |
| Exhibit 3 | USGS quad map showing location of the project's facilities.                                     |
| Exhibit 4 | Photographs of the project site.  |

Contact information for the project's engineer is as follows:

Name:	Joe Walter, Principal Planner
Address:	400 Pike Blvd, Lawrenceville, GA 30046
Phone:	(770) 468-8096
E-Mail:	jwalter@ppi.us

Thank you for your consideration.

Sincerely,



Joseph H. Walter, AICP  
Principal Planner

c File

F:\DOCUMENT\18\230 - Social Circle General Services\18-230W\GEFA Loan Applications\2022 DWSRF Application\ENVIRONMENTAL DOCUMENT\WRD 11-08-22.docx  
AJG/  
Attachments

---

NO COMMENTS (CHECK HERE)

Person Representing the Agency:

Printed Name \_\_\_\_\_

Signature \_\_\_\_\_

Date \_\_\_\_\_



November 17, 2022

Kevin Thames, Chief  
US Army Corp of Engineers, Savannah District  
Regulatory Division, Piedmont Branch  
4751 Best Road, Suite 140  
College Park, GA 30337

**RE: Social Circle 2022 Water System Improvements  
Walton County, Georgia**

Dear Mr. Thames:

We are required to submit project planning documents to the Georgia Environmental Protection Division (EPD) for projects that are to be funded under the federal Drinking Water State Revolving Fund (DWSRF). As part of the review process, EPD requires that the project planning documents undergo an interdisciplinary review process. The goal of the review is to assess potential impacts on the environment that may result from the proposed project. This includes issues related to non-game threatened or endangered species in the vicinity of the project.

We are required to submit the project planning documents to your agency, under the State Environmental Review Procedures (SERP) agreed to by the USEPA. Before issuing a "Notice of No Significant Impact" (NONSI) for the project, EPD requires a comment letter from your agency.

To allow the issuance of NONSI, please review and comment on the attached documents within 30 Days. Your comment letter will be included as part of the Environmental Information Document (EID) to be submitted to EPD for review and issuance of a NONSI. **To enable the project to move forward, please issue your comment letter even if you have no comments.** If you choose, and if you have no comments, you may just check the "no comments" box below, and then either stamp this letter with your agency's stamp or sign and date it at the space provided and return this letter to the address below.

The following exhibits are attached herein for use in your review:

- |           |   |
|-----------|---|
| Exhibit 1 | Specific Project Information.   |
| Exhibit 2 | Georgia Department of Transportation map showing location of project site within Walton County. |
| Exhibit 3 | USGS quad map showing location of the project's facilities.                                     |
| Exhibit 4 | Photographs of the project site.  |

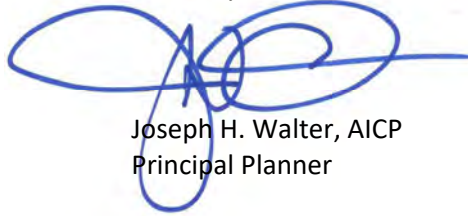
Contact information for the project's engineer is as follows:

Name:	Joe Walter, Principal Planner
Address:	400 Pike Blvd, Lawrenceville, GA 30046
Phone:	(770) 468-8096
E-Mail:	jwalter@ppi.us

Kevin Thames, Chief  
US Army Corp of Engineers, Savannah District  
Regulatory Division, Piedmont Branch  
November 17, 2022  
Page 2

Thank you for your consideration.

Sincerely,



Joseph H. Walter, AICP  
Principal Planner

c File

F:\DOCUMENT\18\230 - Social Circle General Services\18-230W\GEFA Loan Applications\2022 DWSRF Application\ENVIRONMENTAL  
DOCUMENT\INTERAGENCY LETTERS\USACE 11-16-22.docx

AJG/

Attachments

.....

NO COMMENTS (CHECK HERE)

Person Representing the Agency:

Printed Name \_\_\_\_\_

Signature \_\_\_\_\_

Date \_\_\_\_\_





DEPARTMENT OF THE ARMY  
U.S. ARMY CORPS OF ENGINEERS, SAVANNAH DISTRICT  
4751 BEST ROAD, SUITE 140  
COLLEGE PARK, GEORGIA 30337

December 2, 2022

Regulatory Division  
SAS-2022-01081

Ms. Robbie Groves  
City of Social Circle  
PO Box 310  
Social Circle, Georgia 30025

Dear Ms. Groves:

I refer to a letter, dated November 17, 2022, regarding improvements to the City of Social Circle water system in Walton County, Georgia. We understand that the City of Social Circle is proposing to improve the existing water system through both extending and replacing existing water mains and completing electrical upgrades of the existing water treatment plant. The project will involve several locations within Social Circle, including the Brookstone Plant Office Park and the Social Circle Water Treatment Plant. The proposed activities will be funded by the federal Drinking Water State Revolving Fund. The project mid-point is located at the following coordinates: (Latitude: 33.65613, Longitude: -83.718552). This project has been assigned number SAS-2022-01081, and it is important that you refer to this number in all communication concerning this matter.

Please be advised that if the project/activities involve work in waters of the United States considered to be within the jurisdiction of the U.S. Army Corps of Engineers under Section 404 of the Clean Water Act (CWA) and/or Section 10 of the Rivers and Harbors Act (RHA), a permit may be required. The placement of dredged or fill material into any waterways and/or their adjacent wetlands, including material redeposited during mechanized land clearing or excavation of those wetlands, would likely require prior Department of the Army authorization. Based on our review of the information provided and other available sources, the proposed project area (depicted as solid red lines on the figure titled, "EXHIBIT 3 – FACILITIES LOCATION MAP", as prepared by Precision Planning, Incorporated) may contain wetlands and/or streams under the jurisdiction of the U.S. Army Corps of Engineers. If temporary and/or permanent discharge of fill would be incurred in conjunction with this project, verification under Nationwide Permit (NWP) 58 would likely be required for work in project areas. Information regarding NWP 58 and other aspects of our Regulatory Program is available at: <http://www.sas.usace.army.mil/Missions/Regulatory.aspx>.

If an applicant is requesting an "all upland (dry land)" determination or jurisdictional determination for wetlands, they must complete the "Request for Corps of Engineers Jurisdictional Determination (JD) and/or Delineation Review" form and return

it to our office by email to: [cesas-rd-p@usace.army.mil](mailto:cesas-rd-p@usace.army.mil). The form can be found at: [https://www.sas.usace.army.mil/Portals/61/docs/Regulatory/JD/Revised\\_Appendix%201v2.pdf?ver=2018-04-10-111939-157](https://www.sas.usace.army.mil/Portals/61/docs/Regulatory/JD/Revised_Appendix%201v2.pdf?ver=2018-04-10-111939-157). Please keep in mind that an approved Jurisdictional Determination must be requested if you need the Corps to confirm that a site is composed entirely of dry land.

If the project does not involve waters of the United States under Corps jurisdiction, then a Department of the Army permit is not required. Learn more about our program at: <http://www.sas.usace.army.mil/Missions/Regulatory.aspx>. A list of environmental consultants that can assist with delineation and permitting is also maintained on our website.

An electronic copy of this letter is being provided to the following party: Joe Walter, Precision Planning, Inc., via email at [jwalter@ppi.us](mailto:jwalter@ppi.us).

Thank you in advance for completing our on-line Customer Survey Form located at <https://regulatory.ops.usace.army.mil/customer-service-survey/>. We value your comments and appreciate your taking the time to complete a survey each time you interact with our office.

If you have any questions, please contact Shelby LeMaster, Biologist, Management Branch at (678) 429-9498, or [Shelby.T.LeMaster@usace.army.mil](mailto:Shelby.T.LeMaster@usace.army.mil).

Sincerely,

Kevin D. Thames  
Chief, Piedmont Branch

**APPENDIX C**  
**SERVICE DELIVERY STRATEGY DOCUMENTATION**



**SERVICE DELIVERY STRATEGY**

**FORM 2: Summary of Service Delivery Arrangements**

**Instructions:**

**Make copies of this form and complete one for each service listed on FORM 1, Section IV.** Use EXACTLY the same service names listed on FORM 1. Answer each question below, attaching additional pages as necessary. If the contact person for this service (listed at the bottom of the page) changes, this should be reported to the Department of Community Affairs.

**COUNTY: WALTON COUNTY**

**Service: *Water Supply and Distribution***

1. Check one box that best describes the agreed upon delivery arrangement for this service:

- a.)  Service will be provided countywide (i.e., including all cities and unincorporated areas) by a single service provider. (If this box is checked, identify the government, authority or organization providing the service.): **Type Name of Government, Authority or Organization Here**
  
- b.)  Service will be provided only in the unincorporated portion of the county by a single service provider. (If this box is checked, identify the government, authority or organization providing the service.): **Type Name of Government, Authority or Organization Here**
  
- c.)  One or more cities will provide this service only within their incorporated boundaries, and the service will not be provided in unincorporated areas. (If this box is checked, identify the government(s), authority or organization providing the service: **Type Name of Government, Authority or Organization Here**
  
- d.)  One or more cities will provide this service only within their incorporated boundaries, and the county will provide the service in unincorporated areas. (If this box is checked, identify the government(s), authority or organization providing the service.): **Type Name of Government, Authority or Organization Here**
  
- e.)  Other (If this box is checked, **attach a legible map delineating the service area of each service provider**, and identify the government, authority, or other organization that will provide service within each service area.): **the Joint Development Authority of Jasper County, Morgan County, Newton County and Walton County determines the water service provider within Stanton Springs and Stanton Springs North which is currently the Newton County Water & Sewer Authority, otherwise, the following provide services: Walton County, City of Loganville, City of Monroe, City of Social Circle and City of Jersey**

2. In developing this strategy, were overlapping service areas, unnecessary competition and/or duplication of this service identified?

- Yes** (if "Yes," you must attach additional documentation as described, below)
- No**

If these conditions will continue under this strategy, **attach an explanation for continuing the arrangement** (i.e., overlapping but higher levels of service (See O.C.G.A. 36-70-24(1)), overriding benefits of the duplication, or reasons that overlapping service areas or competition cannot be eliminated).

If these conditions will be eliminated under the strategy, **attach an implementation schedule** listing each step or action that

will be taken to eliminate them, the responsible party and the agreed upon deadline for completing it.

## SDS FORM 2, continued

3. List each government or authority that will help to pay for this service and indicate how the service will be funded (e.g., enterprise funds, user fees, general funds, special service district revenues, hotel/motel taxes, franchise taxes, impact fees, bonded indebtedness, etc.).

<i>Local Government or Authority</i>	<i>Funding Method</i>
JDA	User Fees/Grants
Loganville	User Fees/Grants
Monroe	User Fees/Grants
Jersey	User Fees/Grants
Social Circle	User Fees/Grants
Walton County	User Fees/Grants

4. How will the strategy change the previous arrangements for providing and/or funding this service within the county?

The Joint Development Authority of Jasper, Morgan, Newton and Walton Counties ("JDA") may determine the service provider within Stanton Springs and Stanton Springs North.

5. List any formal service delivery agreements or intergovernmental contracts that will be used to implement the strategy for this service:

<i>Agreement Name</i>	<i>Contracting Parties</i>	<i>Effective and Ending Dates</i>
Master Service Delivery Agree	Walton County/Between/Good Hope/Jersey/Loganville Monroe/Social Circle/Walnut Grove	July 2019 - July 2029
IGA re Sewer Service	JDA, Walton Co, Newton Co, Morgan Co, Jasper Co, and, Social Circle	7/23/2002 - 7/23/2052
IGA re Stanton Springs North	JDA and Social Circle	April 2021 - April 2071

6. What other mechanisms (if any) will be used to implement the strategy for this service (e.g., ordinances, resolutions, local acts of the General Assembly, rate or fee changes, etc.), and when will they take effect?

None.

7. Person completing form: **Andrea Gray, Attorney for Joint Development Authority of Jasper, Morgan, Newton & Walton Counties**

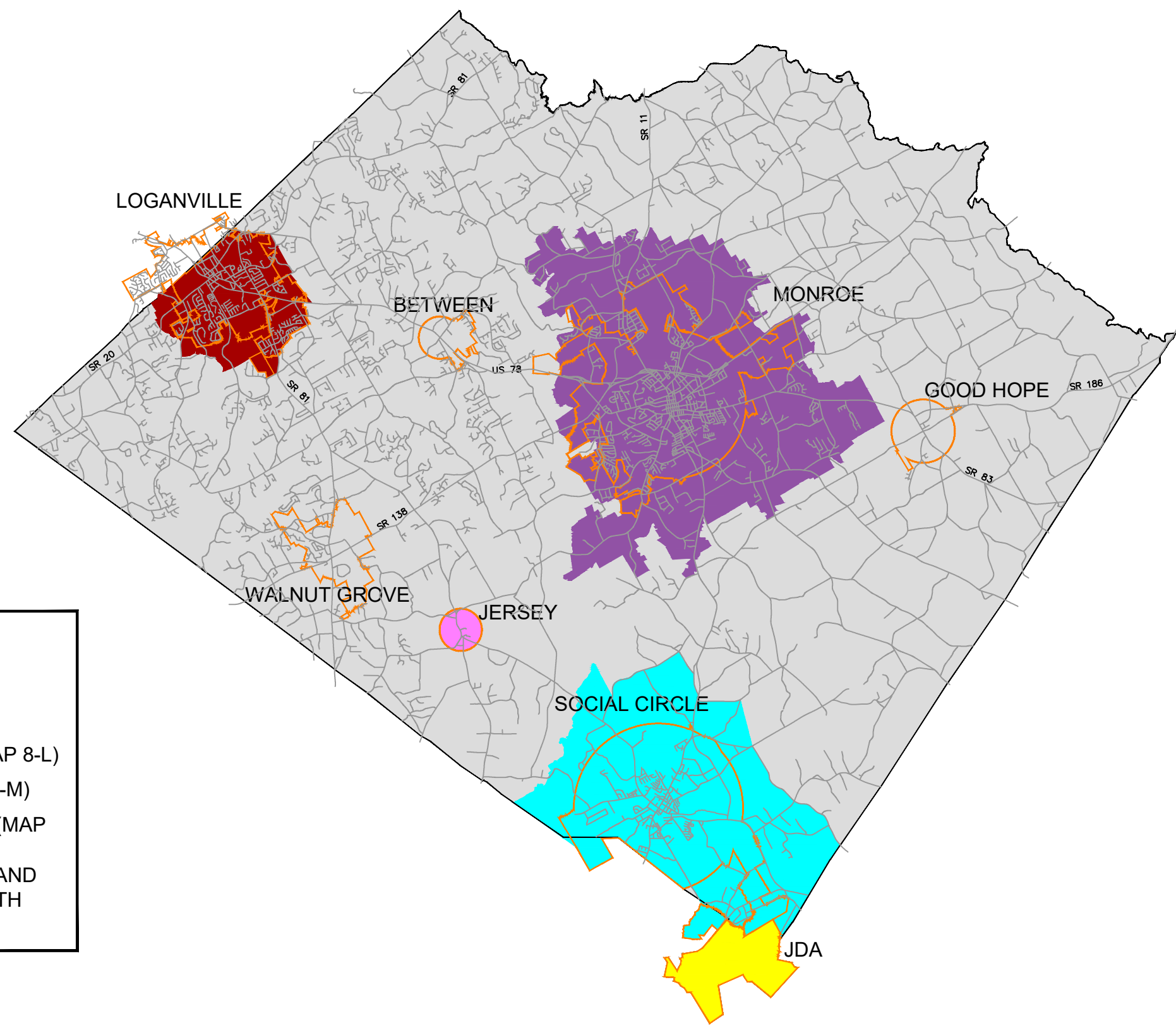
Phone number: **770-235-1083**      Date completed: 3/7/2022








8. Is this the person who should be contacted by state agencies when evaluating whether proposed local government projects are consistent with the service delivery strategy?  Yes  No

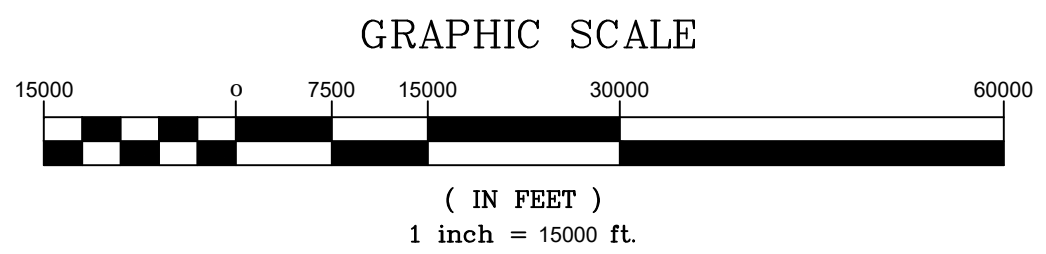
If not, provide designated contact person(s) and phone number(s) below:

**WALTON COUNTY - DAVID THOMPSON, CHAIRMAN 770-267-1301**  
**CITY OF BETWEEN - ROBERT POST, MAYOR, 770-366 -1240**  
**CITY OF GOOD HOPE - RANDY GARRETT, MAYOR, (678) 986-0441**  
**CITY OF JERSEY - MIKE MALCOM, ATTORNEY, 770-267-2503**  
**CITY OF LOGANVILLE - DANNY ROBERTS, CITY MANAGER, 770-466-1165**  
**CITY OF MONROE - LOGAN PROPES, CITY MANAGER, 770-267-3429**

**CITY OF SOCIAL CIRCLE - CITY MANAGER - 770-464-6901**  
**CITY OF WALNUT GROVE - MARK MOORE, MAYOR (770) 787-0046**  
**JOINT DEVELOPMENT AUTHORITY OF JASPER, MORGAN, NEWTON AND WALTON COUNTIES - ANDREA GRAY,**  
**ATTORNEY, 770-235-1083**



-  CITY LIMITS
-  WALTON COUNTY
-  CITY OF JERSEY
-  CITY OF LOGANVILLE (MAP 8-L)
-  CITY OF MONROE (MAP 8-M)
-  CITY OF SOCIAL CIRCLE (MAP 8-SC)
-  JDA STANTON SPRINGS AND STANTON SPRINGS NORTH (NCWSA WATER)

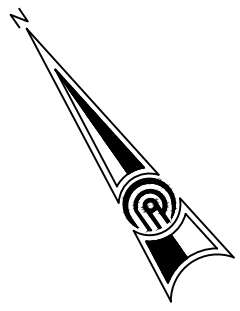


**PRECISION**  
Planning Inc.  
planners • engineers • architects • surveyors  
400 Pike Boulevard, Lawrenceville, Ga 30046  
770.338.8000 • www.ppi.us

**WALTON COUNTY  
WATER SERVICE AREAS**

SERVICE DELIVERY STRATEGY		
Land lot:	District:	Date: SEPT 2021
County: WALTON		<b>8</b>
Drawn By: SS	Field By:	
Checked By: JP		
Job #: T03170L	Scale: NA	





# SOCIAL CIRCLE

# JDA

GRAPHIC SCALE



( IN FEET )  
1 inch = 4000 ft.

- JDA
- CITY OF SOCIAL CIRCLE

**PRECISION**  
Planning Inc.  
planners • engineers • architects • surveyors  
400 Pike Boulevard, Lawrenceville, Ga 30046  
770.338.8000 • www.ppi.us

CITY OF SOCIAL CIRCLE  
WATER SERVICE AREA

### SERVICE AREA MAP

Land lot:	District:	Date: SEPT 2021
County: WALTON		
Drawn By: SS	Field By:	
Checked By: JP		
Job #: T03170L	Scale: NA	

## 8-SC

## **APPENDIX D**

### **PUBLIC PARTICIPATION DOCUMENTATION**

#### **Contents:**

Screenshot of Website Public Meeting Advertisement

Screenshot of Website Copy of Environmental Planning Document

Screenshot of Website Public Meeting Date

List of Attendees

Public Meeting Minutes

**APPENDIX E**

**PHASE 1 ARCHAEOLOGICAL STUDY**